



Flowmeter Product Directory

MODEL : ASB



FEATURES

- 본제품은 움직일 수 있는 물체를 삽입하여 (Flag) 그 움직임으로 유체흐름 상태를 확인하고 감시하는 유량계이다.
- 압력손실이 극히 적으며 불투명액체, 가스측정에 더욱 적합하다.

SPECIFICATION

CON`N	SIZE	MAT`L	PRESS.	TEMP.	ACCURACY
FLANGE	15A-300A	STEEL	MAX 10kgf/cm ²	MAX 120℃	FS.±1.0%
		SUS304			
SCREW	15A-65A	SUS316			

ASB-6-3-J

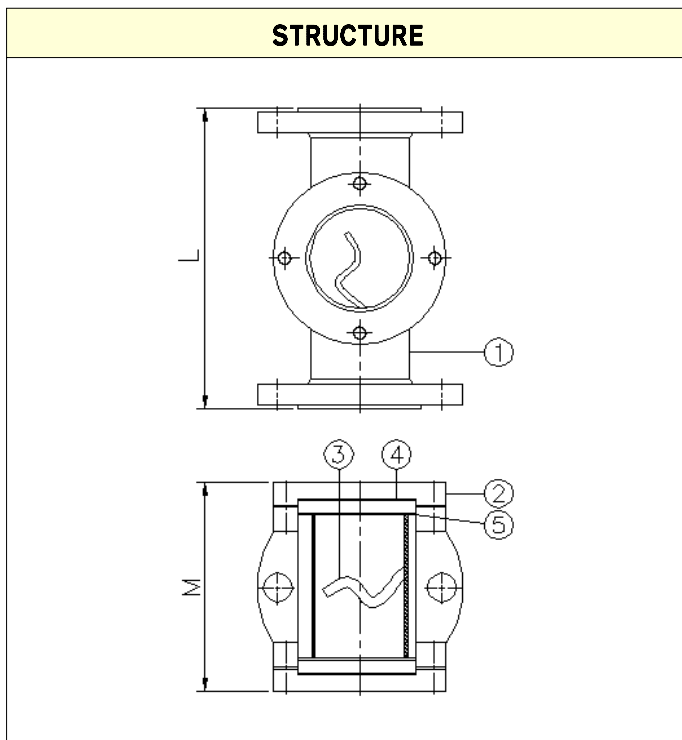
MODEL CODE							
ASB	-	<input type="checkbox"/>	-	<input type="checkbox"/>	-	<input type="checkbox"/>	DESCRIPTION
FLOW DIRECTION		1					BOTTOM - TOP
		5					SIDE - SIDE
		6					TOP - BOTTOM
MATERIAL				1			STEEL
				2			SUS304
				3			SUS316
				0			OTHER
CONNECTION						J	JIS 10K RF (FF)
						A	ANSI 150# RF (FF)
						D	DIN PN10/16
						P	PT(Male / Female)
						N	NPT(Male / Female)
						O	OTHER



Flowmeter Product Directory

MODEL : ASB

FLOW RATE							
SIZE	DIVIDE	ALLOW RANGE		LIMIT	LENGTH (mm)		
		H ₂ O (m ³ /h)	AIR (N ^m /h) 0.5 kgf/cm ² G · 20℃		kgf/cm ²	M	L
				FLANGE			SCREW
15A	1/2B	0.1 - 0.5	6 - 30	10	100	220	150
		0.4 - 2	12 - 60				
20A	3/4B	0.1 - 0.5	6 - 30	10	100	220	160
		0.4 - 2	12 - 60				
25A	1B	0.2 - 1	12 - 60	10	110	220	180
		1 - 5	30 - 150				
32A	1 1/4B	0.2 - 1	12 - 60	10	120	220	200
		1 - 5	30 - 150				
40A	1 1/2B	0.4 - 2	16 - 80	10	125	220	200
		2 - 10	60 - 300				
50A	2B	0.6 - 3	20 - 100	10	135	220	220
		3 - 15	90 - 450				
65A	2 1/2B	1.2 - 6	60 - 300	10	155	260	220
		6 - 30	180 - 900				
80A	3B	1.6 - 8	120 - 600	10	170	300	
		8 - 40	240 - 1200				
100A	4B	3 - 15	180 - 900	10	195	330	
		16 - 80	400 - 2000				
125A	5B	4 - 20	200 - 1000	10	220	380	
		20 - 100	600 - 3000				
150A	6B	6 - 30	240 - 1200	10	250	480	
		30 - 150	900 - 4500				
200A	8B	12 - 60	300 - 1500	10	300	650	
		60 - 300	1800 - 9000				
250A	10B	16 - 80	600 - 3000	10	350	680	
		80 - 400	2400 - 12000				
300A	12B	20 - 100	900 - 4500	10	400	720	
		100 - 500	3000 - 15000				



PART LIST

NO	NAME	MATERIAL		
		NO.1	NO.2	NO.3
1	Body	SPP	SUS304	SUS316
2	Cover	AL2		
3	Flag	POLIESTER, NYLON, PTFE		
4	Sight Glass	GLASS (H.S)		
5	Packing	NBR, EPDM, VITON, TEFLON		