



Flowmeter Product Directory

MODEL : ASM



ASM-5-1-J

FEATURES

- 모든 유체(액체, 기체 및 스팀)측정이 가능하며 슬러지 및 불투명한 액체 측정에 적합한 유량계이다.
(공업용수, 폐수, 도금용액, 각종 오일류, 혼합용 가스, 소화가스, 가성소다,)
- 유체의 흐름방향은 어느 방향이든지 자유롭게 선정할 수 있다. (주문 시 방향 협의)

SPECIFICATION

CON'N	SIZE	MAT`L	PRESS.	TEMP.	ACCURACY
FLANGE	15A-300A	STEEL	ST 10kgf/cm2	ST 120℃	FS.±2.5%
		SUS304			
SCREW	15A-65A	SUS316	SP 20kgf/cm2	SP 200℃	

MODEL CODE

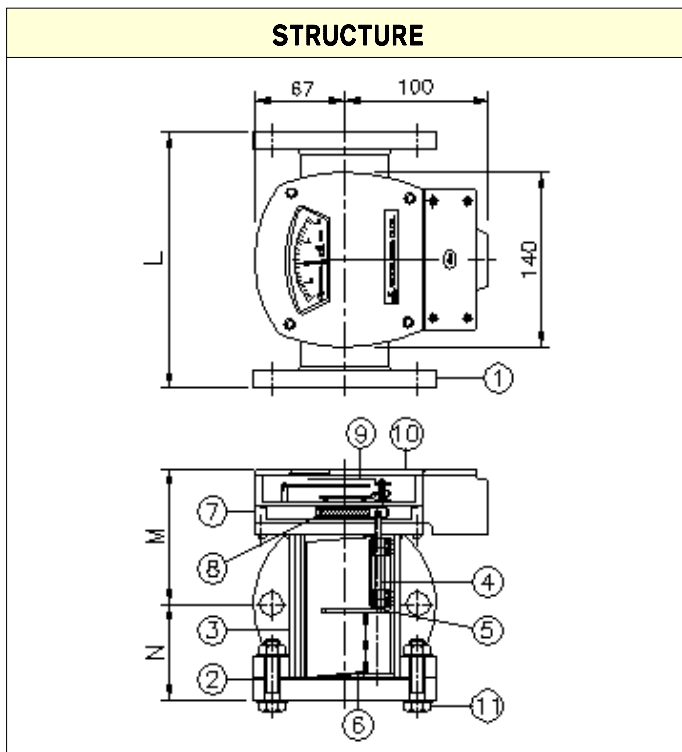
ASM	-	<input type="checkbox"/>	-	<input type="checkbox"/>	-	<input type="checkbox"/>	DESCRIPTION
FLOW DIRECTION		1					BOTTOM - TOP
		5					SIDE - SIDE
		6					TOP - BOTTOM
MATERIAL		1					STEEL
		2					SUS304
		3					SUS316
		0					OTHER
CONNECTION		J					JIS 10K RF (FF)
		A					ANSI 150# RF (FF)
		D					DIN PN10/16
		P					PT(Male / Female)
		N					NPT(Male / Female)
		O					OTHER



Flowmeter Product Directory

MODEL : ASM

FLOW RATE								
SIZE	DIVIDE	ALLOW RANGE			LENGTH (mm)			
		H ₂ O (m ³ /h)	AIR (Nm ³ /h) 0.5 kgf/cm ² G · 20°C	STEAM (kg/h) 3 kgf/cm ² G	M	N	L	
							FLANGE	SCREW
15A	1/2B	0.1 - 0.5	6 - 30	10 - 50	85 ⁺¹ ₋₂	55	220	150
		0.4 - 2	12 - 60	20 - 100				
20A	3/4B	0.1 - 0.5	6 - 30	10 - 50	85 ⁺¹ ₋₂	55	220	160
		0.4 - 2	12 - 60	20 - 100				
25A	1B	0.2 - 1	12 - 60	10 - 50	90 ⁺¹ ₋₂	60	220	180
		1 - 5	30 - 150	40 - 200				
32A	1 1/4B	0.2 - 1	12 - 60	10 - 50	90 ⁺¹ ₋₂	60	220	200
		1 - 5	30 - 150	40 - 200				
40A	1 1/2B	0.4 - 2	16 - 80	20 - 100	95 ⁺¹ ₋₂	65	220	200
		2 - 10	60 - 300	80 - 400				
50A	2B	0.6 - 3	20 - 100	20 - 100	100 ⁺¹ ₋₂	70	220	220
		3 - 15	90 - 450	120 - 600				
65A	2 1/2B	1.2 - 6	60 - 300	80 - 400	110 ⁺¹ ₋₂	80	260	220
		6 - 30	180 - 900	240 - 1200				
80A	3B	1.6 - 8	120 - 600	100 - 500	110 ⁺¹ ₋₂	80	300	
		8 - 40	240 - 1200	400 - 2000				
100A	4B	3 - 15	180 - 900	200 - 1000	130 ⁺¹ ₋₂	100	330	
		16 - 80	400 - 2000	700 - 3500				
125A	5B	4 - 20	200 - 1000	200 - 1000	140 ⁺¹ ₋₂	110	380	
		20 - 100	600 - 3000	900 - 4500				
150A	6B	6 - 30	240 - 1200		200 ⁺¹ ₋₂	150	480	
		30 - 150	900 - 4500					
200A	8B	12 - 60	300 - 1500		210 ⁺¹ ₋₂	180	650	
		60 - 300	1800 - 9000					
250A	10B	16 - 80	600 - 3000		230 ⁺¹ ₋₂	200	680	
		80 - 400	2400 - 12000					
300A	12B	20 - 100	900 - 4500		280 ⁺¹ ₋₂	250	720	
		100 - 500	3000 - 15000					



PART LIST

NO	NAME	MATERIAL		
		NO.1	NO.2	NO.3
1	Flange	SS400	SUS304	SUS316
2	Packing	NBR, EPDM, VITON, TEFLON		
3	Body	SPP	SUS304	SUS316
4	Shaft	SS	SUS304	SUS316
5	Spring	SUS304	SUS304	SUS316
6	Flapper	SS	SUS304	SUS316
7	Magnet Room	SUS304	SUS304	SUS316
8	Magnet	ALNICO		
9	Index	AL		
10	Cover	AL2		
11	Bolt Nut	STEEL	SUS304	SUS316



Flowmeter Product Directory

MODEL : ASM



ASM-1-3-A

FEATURES

- 모든 유체(액체, 기체 및 스팀)측정이 가능하며 슬러지 및 불투명한 액체 측정에 적합한 유량계이다.
(공업용수, 폐수, 도금용액, 각종 오일류, 혼합용 가스, 소화가스, 가성소다,)
- 유체의 흐름방향은 어느 방향이든지 자유롭게 선정할 수 있다. (주문 시 방향 협의)

SPECIFICATION

CON'N	SIZE	MAT`L	PRESS.	TEMP.	ACCURACY
FLANGE	15A-300A	STEEL	ST 10kgf/cm2	ST 120℃	FS.±2.5%
		SUS304			
SCREW	15A-65A	SUS316	SP 40kgf/cm2	SP 200℃	

MODEL CODE

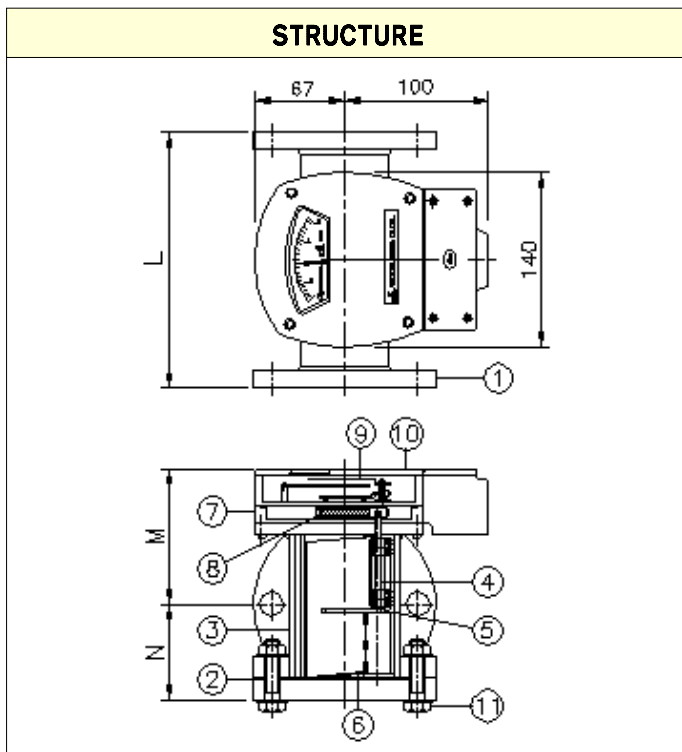
ASM	-	<input type="checkbox"/>	-	<input type="checkbox"/>	-	<input type="checkbox"/>	DESCRIPTION
FLOW DIRECTION		1					BOTTOM - TOP
		5					SIDE - SIDE
		6					TOP - BOTTOM
MATERIAL		1					STEEL
		2					SUS304
		3					SUS316
		0					OTHER
CONNECTION		J					JIS 10K RF (FF)
		A					ANSI 150# RF (FF)
		D					DIN PN10/16
		P					PT(Male / Female)
		N					NPT(Male / Female)
		O					OTHER



Flowmeter Product Directory

MODEL : ASM

FLOW RATE								
SIZE	DIVIDE	ALLOW RANGE			LENGTH (mm)			
		H ₂ O (m ³ /h)	AIR (Nm ³ /h) 0.5 kgf/cm ² G · 20°C	STEAM (kg/h) 3 kgf/cm ² G	M	N	L	
							FLANGE	SCREW
15A	1/2B	0.1 - 0.5	6 - 30	10 - 50	85 ⁺¹ ₋₂	55	220	150
		0.4 - 2	12 - 60	20 - 100				
20A	3/4B	0.1 - 0.5	6 - 30	10 - 50	85 ⁺¹ ₋₂	55	220	160
		0.4 - 2	12 - 60	20 - 100				
25A	1B	0.2 - 1	12 - 60	10 - 50	90 ⁺¹ ₋₂	60	220	180
		1 - 5	30 - 150	40 - 200				
32A	1 1/4B	0.2 - 1	12 - 60	10 - 50	90 ⁺¹ ₋₂	60	220	200
		1 - 5	30 - 150	40 - 200				
40A	1 1/2B	0.4 - 2	16 - 80	20 - 100	95 ⁺¹ ₋₂	65	220	200
		2 - 10	60 - 300	80 - 400				
50A	2B	0.6 - 3	20 - 100	20 - 100	100 ⁺¹ ₋₂	70	220	220
		3 - 15	90 - 450	120 - 600				
65A	2 1/2B	1.2 - 6	60 - 300	80 - 400	110 ⁺¹ ₋₂	80	260	220
		6 - 30	180 - 900	240 - 1200				
80A	3B	1.6 - 8	120 - 600	100 - 500	110 ⁺¹ ₋₂	80	300	
		8 - 40	240 - 1200	400 - 2000				
100A	4B	3 - 15	180 - 900	200 - 1000	130 ⁺¹ ₋₂	100	330	
		16 - 80	400 - 2000	700 - 3500				
125A	5B	4 - 20	200 - 1000	200 - 1000	140 ⁺¹ ₋₂	110	380	
		20 - 100	600 - 3000	900 - 4500				
150A	6B	6 - 30	240 - 1200		200 ⁺¹ ₋₂	150	480	
		30 - 150	900 - 4500					
200A	8B	12 - 60	300 - 1500		210 ⁺¹ ₋₂	180	650	
		60 - 300	1800 - 9000					
250A	10B	16 - 80	600 - 3000		230 ⁺¹ ₋₂	200	680	
		80 - 400	2400 - 12000					
300A	12B	20 - 100	900 - 4500		280 ⁺¹ ₋₂	250	720	
		100 - 500	3000 - 15000					



PART LIST				
NO	NAME	MATERIAL		
		NO.1	NO.2	NO.3
1	Flange	SS400	SUS304	SUS316
2	Packing	NBR, EPDM, VITON, TEFLON		
3	Body	SPP	SUS304	SUS316
4	Shaft	SS	SUS304	SUS316
5	Spring	SUS304	SUS304	SUS316
6	Flapper	SS	SUS304	SUS316
7	Magnet Room	SUS304	SUS304	SUS316
8	Magnet	ALNICO		
9	Index	AL		
10	Cover	AL2		
11	Bolt Nut	STEEL	SUS304	SUS316



Flowmeter Product Directory

MODEL : ASMA



ASMA-6-3-A-1

FEATURES

·본 제품은 순간유량 측정용(ASM)에 접점(Alarm Contact) 기능을 추가한 제품으로 접점신호는 1점점과 2 점점으로 구분 한다.

SPECIFICATION

CON`N	SIZE	MAT`L	PRESS.		TEMP.		ACCURACY	
			ST.	SP.	ST.	SP.	H ₂ O	GAS
FLANGE	15A-300A	STEEL SUS304	ST.	10kgf/cm ²	ST.	120℃	FS	FS
SCREW	15A-65A	SUS316	SP.	40kgf/cm ²	SP.	200℃	±2.5%	±3.0%

ALARM CONTACT

CAPACITY	AC 220V 0.5A / DC24V 0.05A
CONTACT OUTPUT	HIGH OR LOW SET ALARM
CONTACT TYPE	SENSOR SELF HOLDING FORM
CONTACT RATE	SPST RELAY OUTPUT
CABLE ENTRY	PF 1/2" FEMALE
AMBIENT TEMP	-10 ~80℃

MODEL CODE

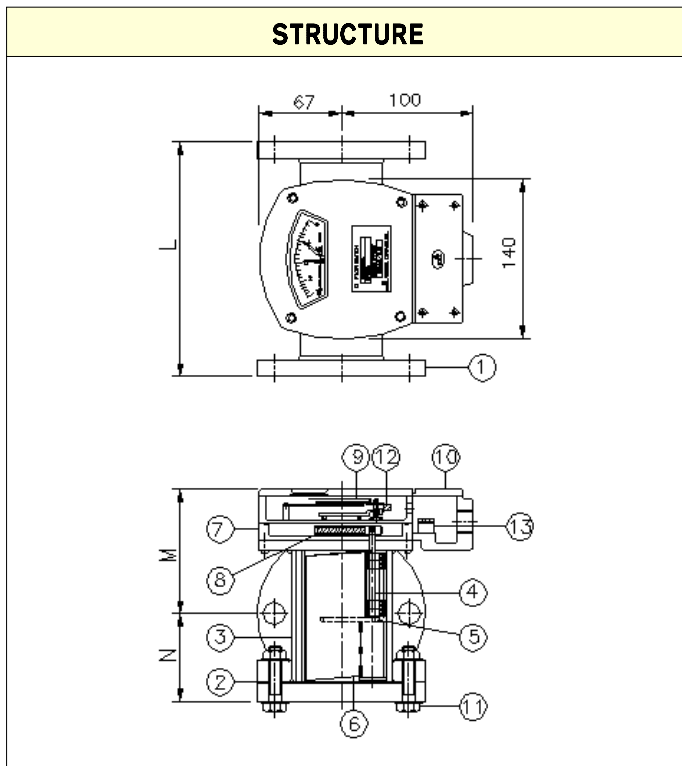
ASMA	—	<input type="checkbox"/>	—	<input type="checkbox"/>	—	<input type="checkbox"/>	—	<input type="checkbox"/>	DESCRIPTION
FLOW DIRECTION		1							BOTTOM - TOP
		5							SIDE - SIDE
		6							TOP - BOTTOM
MATERIAL			1						STEEL
			2						SUS304
			3						SUS316
			0						OTHER
CONNECTION					J				JIS 10K RF (FF)
					A				ANSI 150# RF (FF)
					D				DIN PN10/16
					P				PT(Male / Female)
					N				NPT(Male / Female)
					0				OTHER
CONTACT							1		ONE POINT ALARM
							2		TWO POINT ALARM



Flowmeter Product Directory

MODEL : ASMA

FLOW RATE								
SIZE	DIVIDE	ALLOW RANGE			LENGTH (mm)			
		H ₂ O (m ³ /h)	AIR (Nm ³ /h) 0.5 kgf/cm ² G · 20°C	STEAM (kg/h) 3 kgf/cm ² G	M	N	L	
							FLANGE	SCREW
15A	1/2B	0.1 - 0.5	6 - 30	10 - 50	85	55	220	150
		0.4 - 2	12 - 60	20 - 100				
20A	3/4B	0.1 - 0.5	6 - 30	10 - 50	85	55	220	160
		0.4 - 2	12 - 60	20 - 100				
25A	1B	0.2 - 1	12 - 60	10 - 50	90	60	220	180
		1 - 5	30 - 150	40 - 200				
32A	1 1/4B	0.2 - 1	12 - 60	10 - 50	90	60	220	200
		1 - 5	30 - 150	40 - 200				
40A	1 1/2B	0.4 - 2	16 - 80	20 - 100	95	65	220	200
		2 - 10	60 - 300	80 - 400				
50A	2B	0.6 - 3	20 - 100	20 - 100	100	70	220	220
		3 - 15	90 - 450	120 - 600				
65A	2 1/2B	1.2 - 6	60 - 300	80 - 400	110	80	260	220
		6 - 30	180 - 900	240 - 1200				
80A	3B	1.6 - 8	120 - 600	100 - 500	110	80	300	
		8 - 40	240 - 1200	400 - 2000				
100A	4B	3 - 15	180 - 900	200 - 1000	130	100	330	
		16 - 80	400 - 2000	700 - 3500				
125A	5B	4 - 20	200 - 1000	200 - 1000	140	110	380	
		20 - 100	600 - 3000	900 - 4500				
150A	6B	6 - 30	240 - 1200		200	150	480	
		30 - 150	900 - 4500					
200A	8B	12 - 60	300 - 1500		210	180	650	
		60 - 300	1800 - 9000					
250A	10B	16 - 80	600 - 3000		230	200	680	
		80 - 400	2400 - 12000					
300A	12B	20 - 100	900 - 4500		280	250	720	
		100 - 500	3000 - 15000					



PART LIST

NO	NAME	MATERIAL		
		NO.1	NO.2	NO.3
1	Flange	SS400	SUS304	SUS316
2	Packing	NBR, EPDM, VITON, TEFLON		
3	Body	SPP	SUS304	SUS316
4	Shaft	SS	SUS304	SUS316
5	Spring	SUS304	SUS304	SUS316
6	Flapper	SS	SUS304	SUS316
7	Magnet Room	SUS304	SUS304	SUS316
8	Magnet	ALNICO		
9	Index	AL		
10	Cover	AL2		
11	Bolt Nut	STEEL	SUS304	SUS316
12	Sensor	REED S/W (PACKAGE)		
13	Terminal Box	AL2		



Flowmeter Product Directory

MODEL : ASMA1



ASMA1-5-1-J-1

FEATURES

- 본 제품은 순간유량 측정과 경보, 점점(Alarm Signal) 기능을 부가한 제품으로 점점 신호는 1 점점과 2 점점으로 구분한다.
- 점점(Contact)을 설정하는 기구가 외부에서 조절(Adjust)할 수 있도록 설계 되어 경보 점점 위치를 수시로 이동하는 라인에서 사용하기에 최적이다.

SPECIFICATION

CON'N	SIZE	MAT'L	PRESS.	TEMP.	ACCURACY
FLANGE	15A-300A	STEEL	ST 10kgf/cm2	ST 120℃	FS.±3.0%
SCREW	15A-65A	SUS304	SP 40kgf/cm2	SP 200℃	
		SUS316			

ALARM CONTACT

CAPACITY	AC 220V 0.5A / DC 24V 0.05A
CONTACT OUTPUT	HIGH OR LOW SET ALARM
CONTACT TYPE	SENSOR SELF HOLDING FORM
CONTACT RATE	SPST RELAY OUTPUT
AMBIENT TEMP	-10 ~ 80℃
CABLE ENTRY	PF 1/2" FEMALE

MODEL CODE

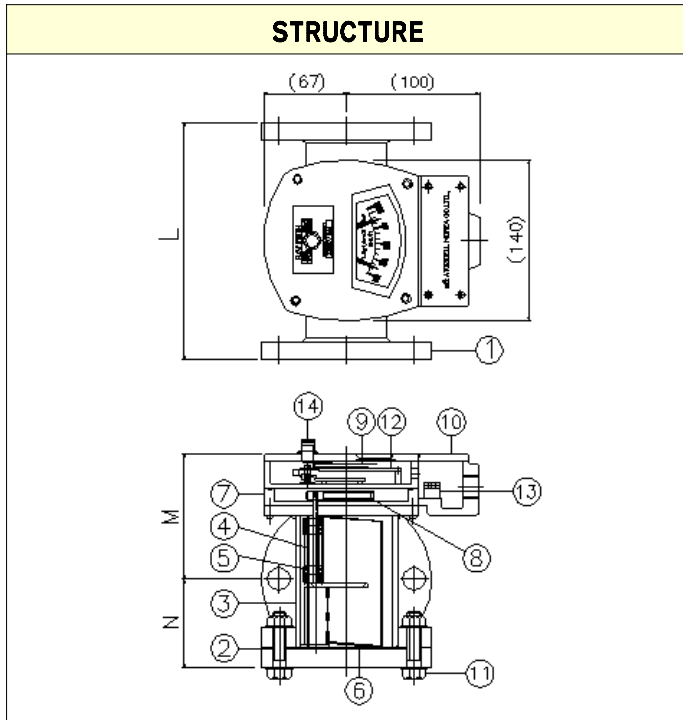
ASMA1	—	<input type="checkbox"/>	—	<input type="checkbox"/>	—	<input type="checkbox"/>	—	<input type="checkbox"/>	DESCRIPTION
FLOW DIRECTION		1							BOTTOM - TOP
		5							SIDE - SIDE
		6							TOP - BOTTOM
MATERIAL				1					STEEL
				2					SUS304
				3					SUS316
				0					OTHER
CONNECTION						J			JIS 10K RF (FF)
						A			ANSI 150# RF (FF)
						D			DIN PN10/16
						P			PT(Male / Female)
						N			NPT(Male / Female)
						O			OTHER
CONTACT								1	ONE POINT ALARM
								2	TWO POINT ALARM



Flowmeter Product Directory

MODEL : ASMA1

FLOW RATE								
SIZE	DIVIDE	ALLOW RANGE			LENGTH (mm)			
		H ₂ O (m ³ /h)	AIR (Nm ³ /h) 0.5 kgf/cm ² G · 20°C	STEAM (kg/h) 3 kgf/cm ² G	M	N	L	
							FLANGE	SCREW
15A	1/2B	0.1 - 0.5	6 - 30	10 - 50	85	55	220	150
		0.4 - 2	12 - 60	20 - 100				
20A	3/4B	0.1 - 0.5	6 - 30	10 - 50	85	55	220	160
		0.4 - 2	12 - 60	20 - 100				
25A	1B	0.2 - 1	12 - 60	10 - 50	90	60	220	180
		1 - 5	30 - 150	40 - 200				
32A	1 1/4B	0.2 - 1	12 - 60	10 - 50	90	60	220	200
		1 - 5	30 - 150	40 - 200				
40A	1 1/2B	0.4 - 2	16 - 80	20 - 100	95	65	220	200
		2 - 10	60 - 300	80 - 400				
50A	2B	0.6 - 3	20 - 100	20 - 100	100	70	220	220
		3 - 15	90 - 450	120 - 600				
65A	2 1/2B	1.2 - 6	60 - 300	80 - 400	110	80	260	220
		6 - 30	180 - 900	240 - 1200				
80A	3B	1.6 - 8	120 - 600	100 - 500	110	80	300	
		8 - 40	240 - 1200	400 - 2000				
100A	4B	3 - 15	180 - 900	200 - 1000	130	100	330	
		16 - 80	400 - 2000	700 - 3500				
125A	5B	4 - 20	200 - 1000	200 - 1000	140	110	380	
		20 - 100	600 - 3000	900 - 4500				
150A	6B	6 - 30	240 - 1200		200	150	480	
		30 - 150	900 - 4500					
200A	8B	12 - 60	300 - 1500		210	180	650	
		60 - 300	1800 - 9000					
250A	10B	16 - 80	600 - 3000		230	200	680	
		80 - 400	2400 - 12000					
300A	12B	20 - 100	900 - 4500		280	250	720	
		100 - 500	3000 - 15000					



PART LIST

NO	NAME	MATERIAL		
		NO.1	NO.2	NO.3
1	Flange	SS400	SUS304	SUS316
2	Packing	NBR, EPDM, VITON, TEFLON		
3	Body	SPP	SUS304	SUS316
4	Shaft	SS	SUS304	SUS316
5	Spring	SUS304	SUS304	SUS316
6	Flapper	SS	SUS304	SUS316
7	Magnet Room	SUS304	SUS304	SUS316
8	Magnet	ALNICO		
9	Index	AL		
10	Cover	AL2		
11	Bolt Nut	STEEL	SUS304	SUS316
12	Sensor	REED S/W (PACKAGE)		
13	Terminal	ABS		
14	Index Adjust	MF.STAND		



Flowmeter Product Directory

MODEL : ASG401



FEATURES

- 공간이 충분치 않는 곳에 설치 할 수 있도록 소형화 되어 있는 유량계로 소규격, 소유량 측정에 적합하다.
- 오일측정에 최적이다.
(식용유, 중유, 모타오일, 터빈유, 등유)

SPECIFICATION

CON'N	SIZE	MAT'L	PRESS.	TEMP.	ACCURACY
FLANGE	15A-50A	STEEL	ST 10kgf/cm ²	ST 120℃	FS.±3.0%
		SUS304			
SCREW		SUS316	SP 40kgf/cm ²	SP 200℃	

MODEL CODE

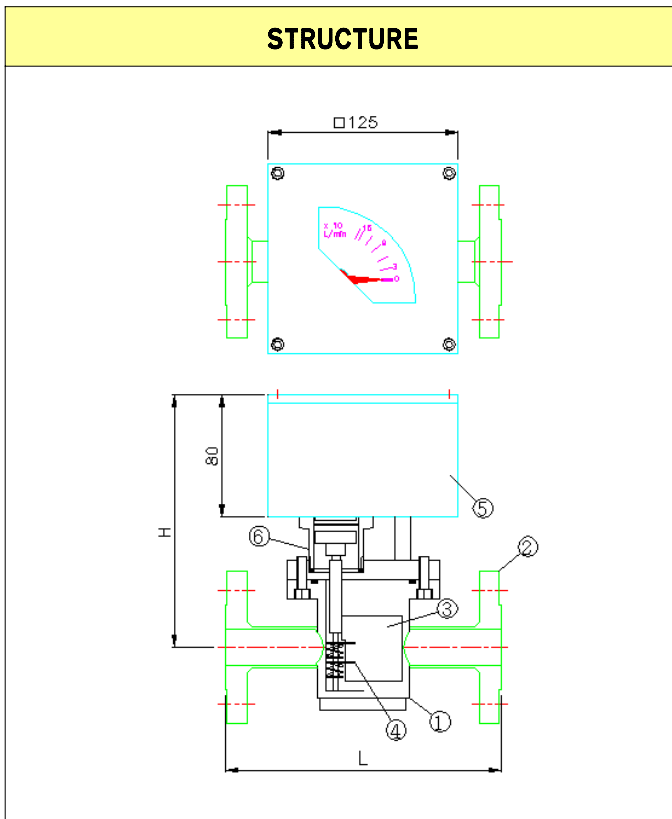
ASG401	-	<input type="checkbox"/>	-	<input type="checkbox"/>	-	<input type="checkbox"/>	DESCRIPTION
FLOW DIRECTION	1						BOTTOM - TOP
	5						SIDE - SIDE
	6						TOP - BOTTOM
MATERIAL	1						STEEL
	2						SUS304
	3						SUS316
	0						OTHER
CONNECTION	J						JIS 10K RF (FF)
	A						ANSI 150# RF (FF)
	D						DIN PN10/16
	P						PT(Male / Female)
	N						NPT(Male / Female)
	O						OTHER



Flowmeter Product Directory

MODEL : ASG401

FLOW RATE							
SIZE \ DIVIDE		ALLOW RANGE				LENGTH (mm)	
		H ₂ O (m ³ /h)	LIQUID (L/min)	AIR (Nm ³ /h) 0.5 kgf/cm ² G · 20℃	STEAM (kg/h) 3 kgf/cm ² G	H	L
15A	1/2B	0.1 - 0.5	1 - 5	6 - 30	10 - 50	140	150
		0.4 - 2	2 - 10	12 - 60	20 - 100		
20A	3/4B	0.1 - 0.5	2 - 10	6 - 30	10 - 50	150	160
		0.4 - 2	8 - 40	12 - 60	20 - 100		
25A	1B	0.2 - 1	10 - 50	12 - 60	10 - 50	160	180
		1 - 5	20 - 100	30 - 150	40 - 200		
32A	1 1/4B	0.2 - 1	20 - 100	12 - 60	10 - 50	170	200
		1 - 5	30 - 150	30 - 150	40 - 200		
40A	1 1/2B	0.4 - 2	30 - 150	16 - 80	20 - 100	180	200
		2 - 10	40 - 200	60 - 300	80 - 400		
50A	2B	0.6 - 3	40 - 200	20 - 100	20 - 100	200	220
		3 - 15	60 - 300	90 - 450	120 - 600		



PART LIST

NO	NAME	MATERIAL		
		NO.1	NO.2	NO.3
1	Body	SS400	SUS304	SUS316
2	Flange	SS400	SUS304	SUS316
3	Flapper	SS41	SUS304	SUS316
4	Spring	SUS304	SUS304	SUS316
5	Indicator room	ADC(MFS..PACKAGE)		
6	Measure room	SUS304	SUS304	SUS316



Flowmeter Product Directory

MODEL : ASG402



FEATURES

·본 제품은 순간유량 측정용(ASS)에 접점(Alarm Contact) 기능을 추가한 제품으로 접점신호는 1점점과 2 점점으로 구분 한다.

·오일측정에 최적이다.(중유, 모타오일, 터빈유, 작동유등)

SPECIFICATION

CON`N	SIZE	MAT`L	PRESS.	TEMP.	ACCURACY
FLANGE	15A-50A	STEEL	ST. 10kgf/cm ²	ST. 120℃	FS ±3.0%
		SUS304			
SCREW		SUS316	SP. 40kgf/cm ²	SP. 200℃	

ALARM CONTACT

CAPACITY	AC 220V 10A
CONTACT OUTPUT	HIGH OR LOW SET ALARM
CONTACT TYPE	SENSOR SELF HOLDING FORM
CONTACT RATE	SPDT RELAY OUTPUT
CABLE ENTRY	PF 1/2" FEMALE
AMBIENT TEMP	-10 ~80℃

MODEL CODE

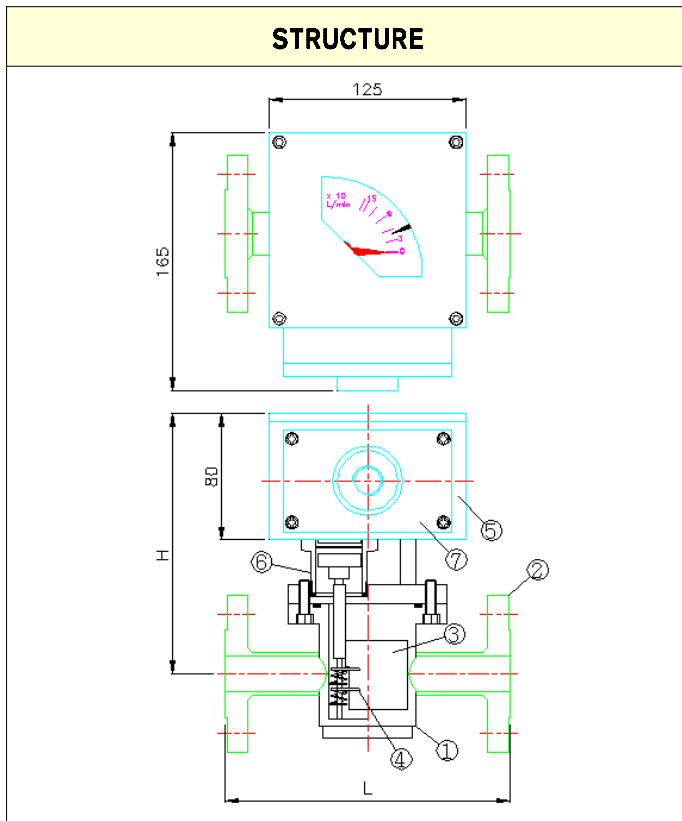
ASG402	-	<input type="checkbox"/>	-	<input type="checkbox"/>	-	<input type="checkbox"/>	-	<input type="checkbox"/>	DESCRIPTION
FLOW DIRECTION		1							BOTTOM - TOP
		5							SIDE - SIDE
		6							TOP - BOTTOM
MATERIAL				1					STEEL
				2					SUS304
				3					SUS316
				0					OTHER
CONNECTION						J			JIS 10K RF
						A			ANSI 150# RF
						D			DIN PN10/16
						P			PT(Male / Female)
						N			NPT(Male / Female)
						O			OTHER
CONTACT								1	ONE POINT ALARM
								2	TWO POINT ALARM



Flowmeter Product Directory

MODEL : ASG402

FLOW RATE							
SIZE \ DIVIDE		ALLOW RANGE				LENGTH (mm)	
		H ₂ O (m ³ /h)	LIQUID (L/min)	AIR (Nm ³ /h) 0.5 kgf/cm ² G · 20℃	STEAM (kg/h) 3 kgf/cm ² G	H	L
15A	1/2B	0.1 - 0.5	1 - 5	6 - 30	10 - 50	160	150
		0.4 - 2	2 - 10	12 - 60	20 - 100		
20A	3/4B	0.1 - 0.5	2 - 10	6 - 30	10 - 50	170	160
		0.4 - 2	8 - 40	12 - 60	20 - 100		
25A	1B	0.2 - 1	10 - 50	12 - 60	10 - 50	180	180
		1 - 5	20 - 100	30 - 150	40 - 200		
32A	1 1/4B	0.2 - 1	20 - 100	12 - 60	10 - 50	190	200
		1 - 5	30 - 150	30 - 150	40 - 200		
40A	1 1/2B	0.4 - 2	30 - 150	16 - 80	20 - 100	200	200
		2 - 10	40 - 200	60 - 300	80 - 400		
50A	2B	0.6 - 3	40 - 200	20 - 100	20 - 100	220	220
		3 - 15	60 - 300	90 - 450	120 - 600		



PART LIST

NO	NAME	MATERIAL		
		NO.1	NO.2	NO.3
1	Body	SS400	SUS304	SUS316
2	Flange	SS400	SUS304	SUS316
3	Flapper	SS41	SUS304	SUS316
4	Spring	SUS304	SUS304	SUS316
5	Indicator room	ADC(MFS..PACKAGE)		
6	Measure room	SUS304	SUS304	SUS316
7	Terminal room	ADC(MFS..PACKAGE)		



Flowmeter Product Directory

MODEL : ASG



ASG-1-3-N-W

FEATURES

- 본 제품은 극히 미소량을 감시하거나 측정할 경우 적합하다.
- 유체의 흘러가는 양을 관찰할 수 있고 유량표기를 선택할 수 있다.
- 유체 흐름 방향에 제한이 없으며 특히 점도가 큰 액체에서도 사용 가능하다.

SPECIFICATION

CON'N	SIZE	MAT'L	PRESS.	TEMP.	ACCURACY
SCREW	1/8" - 1"	STEEL	MAX 20kgf/cm ²	MAX 120℃	FS ±2.5%
		SUS304			
		SUS316			

MODEL CODE

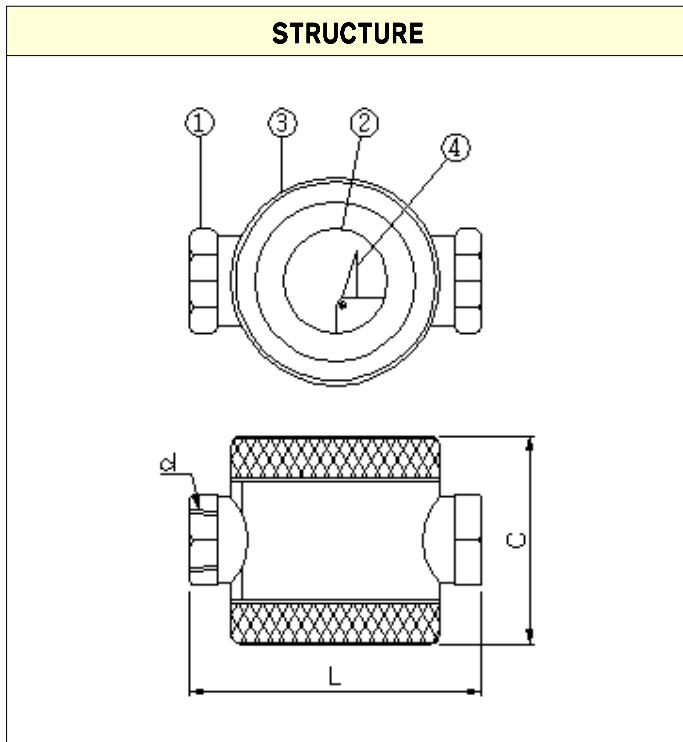
ASG	-	□	-	□	-	□			DESCRIPTION
FLOW DIRECTION		1							BOTTOM - TOP
		5							SIDE - SIDE
		6							TOP - BOTTOM
MATERIAL				1					STEEL
				2					SUS304
				3					SUS316
				0					OTHER
CONNECTION						P			PT(Male / Female)
						N			NPT(Male / Female)
						0			OTHER
ACCESSORY							W		WITHOUT
							V		VALVE (NEEDLE, BALL)
							0		OTHER



Flowmeter Product Directory

MODEL : ASG

FLOW RATE						
SIZE(d)	DIVIDE	ALLOW RANGE		LIMIT kgf/cm ²	LENGTH (mm)	
		H ₂ O (ℓ/min)	AIR (N ^m /h) 0.5 kgf/cm ² G · 20℃		L	C
6A	1/8B	1-5	2-10	10	70	60
		1-5	4-20			
8A	1/4B	1-5	2-10	10	70	60
		2-10	5-25			
10A	3/8B	2-10	2-10	10	80	60
		3-15	6-30			
15A	1/2B	3-15	6-30	10	80	80
		5-25	10-50			
20A	3/4B	4-20	8-40	10	90	90
		6-30	12-60			
25A	1B	8-40	12-60	10	100	100
		14-70	30-150			



PART LIST

NO	NAME	MATERIAL		
		NO.1	NO.2	NO.3
1	Body	SS41	SUS304	SUS316
2	Sight	GLASS, ACRYL		
3	Cover	AL2		
4	Flapper	SS41	SUS304	SUS316



Flowmeter Product Directory

MODEL : ASG



ASG-1-2-P-W

FEATURES

- 본 제품은 유체의 흐름을 감시하거나 측정할 경우 적합하다.
- 유체의 흘러가는 양을 관찰할 수 있고 유량표기를 선택할 수 있다.
- 유체 흐름 방향에 제한이 없으며 특히 점도가 큰 액체에서도 사용 가능하다.

SPECIFICATION

CON'N	SIZE	MAT'L	PRESS.	TEMP.	ACCURACY
SCREW	1/2" - 2"	STEEL	MAX 20kgf/cm ²	MAX 120℃	FS ±2.5%
		SUS304			
		SUS316			

MODEL CODE

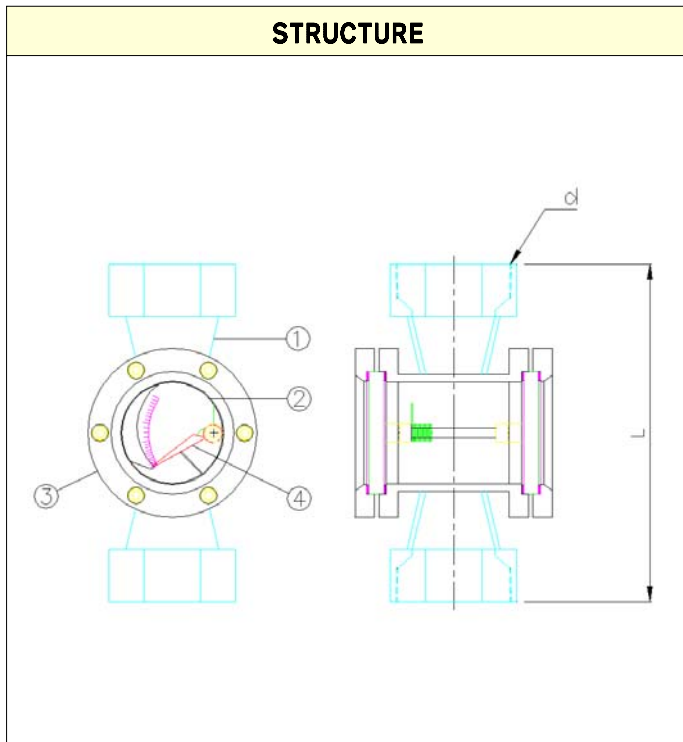
ASG	-	□	-	□	-	□			DESCRIPTION
FLOW DIRECTION		1							BOTTOM - TOP
		5							SIDE - SIDE
		6							TOP - BOTTOM
MATERIAL				1					STEEL
				2					SUS304
				3					SUS316
				0					OTHER
CONNECTION						P			PT(Male / Female)
						N			NPT(Male / Female)
						0			OTHER
ACCESSORY							W		WITHOUT
							V		VALVE (NEEDLE, BALL)
							0		OTHER



Flowmeter Product Directory

MODEL : ASG

FLOW RATE					
SIZE(d) \ DIVIDE		ALLOW RANGE		LIMIT	LENGTH (mm)
		H ₂ O (ℓ/min)	AIR (N ^m /h) 0.5 kgf/cm ² G · 20℃	kgf/cm ²	L
15A	1/2B	3-15	6-30	10	100~150
		5-25	10-50		
20A	3/4B	4-20	8-40	10	100~150
		6-30	12-60		
25A	1B	8-40	12-60	10	100~150
		14-70	30-150		
32A	1 1/4B	14-70	16-80	10	100~200
		20-100	40-200		
40A	1 1/2B	20-100	40-200	10	100~200
		30-150	60-300		
50A	2B	30-150	60-300	10	100~200
		50-250	90-450		



PART LIST				
NO	NAME	MATERIAL		
		NO.1	NO.2	NO.3
1	Body	SS41	SUS304	SUS316
2	Sight	GLASS, ACRYL		
3	Cover	AL2		
4	Flapper	SS41	SUS304	SUS316



Flowmeter Product Directory

MODEL : ASG



FEATURES

- 본제품은 Flapper 형식의 대표적인 모델로 풍부한 납품 실적이 있는 유량계이다.
- GLASS를 통해 유체의 흐름상태를 관찰하고 동시에 유량 값을 측정 할 수 있다.
- 투시되는 GLASS는 내압유리로 단단한 구조이며 외부 충격에 파손이 되어도 안전유리이기 때문에 위험요소를 극히 줄일 수 있다.
- 응고성, 고점도 및 찌꺼기 등의 유체 사용에 적합하다.

SPECIFICATION

CON`N	SIZE	MAT`L	PRESS.	TEMP.	ACCURACY
FLANGE	15A-300A	STEEL	MAX 10kgf/cm ²	MAX 120℃	FS.±3%
		SUS304			
SCREW	15A-65A	SUS316			

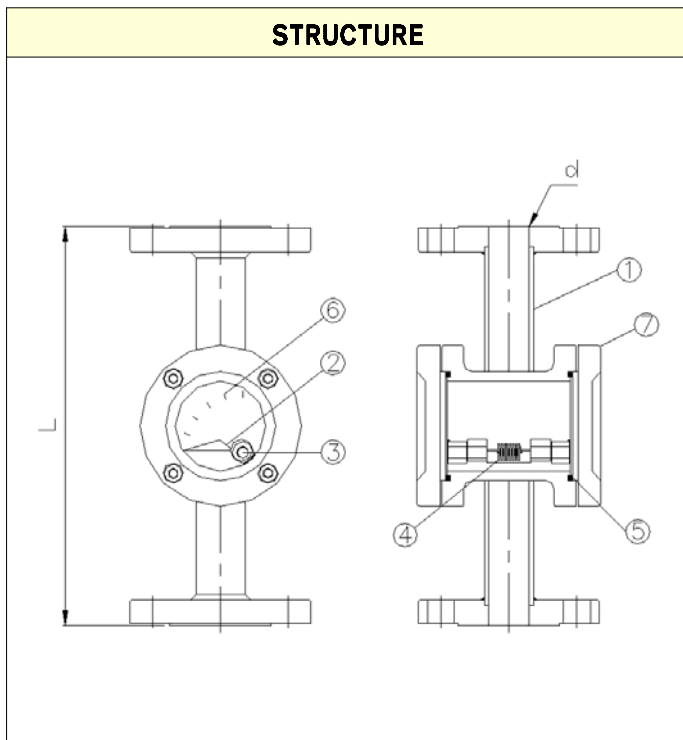
MODEL CODE							
ASG	-	<input type="checkbox"/>	-	<input type="checkbox"/>	-	<input type="checkbox"/>	DESCRIPTION
FLOW DIRECTION		1					BOTTOM - TOP
		5					SIDE - SIDE
		6					TOP - BOTTOM
MATERIAL				1			STEEL
				2			SUS304
				3			SUS316
				0			OTHER
CONNECTION						J	JIS 10K RF (FF)
						A	ANSI 150# RF (FF)
						D	DIN PN10/16
						P	PT(Male / Female)
						N	NPT(Male / Female)
						O	OTHER



Flowmeter Product Directory

MODEL : ASG

FLOW RATE							
SIZE	DIVIDE	ALLOW RANGE		LIMIT kgf/cm ²	LENGTH (mm)		
		H ₂ O (m ³ /h)	AIR (N ^m /h) 0.5 kgf/cm ² G · 20℃		M	L	
						FLANGE	SCREW
15A	1/2B	0.1 - 0.5	6 - 30	10	100	220	150
		0.4 - 2	12 - 60				
20A	3/4B	0.1 - 0.5	6 - 30	10	100	220	160
		0.4 - 2	12 - 60				
25A	1B	0.2 - 1	12 - 60	10	110	220	180
		1 - 5	30 - 150				
32A	1 1/4B	0.2 - 1	12 - 60	10	120	220	200
		1 - 5	30 - 150				
40A	1 1/2B	0.4 - 2	16 - 80	10	125	220	200
		2 - 10	60 - 300				
50A	2B	0.6 - 3	20 - 100	10	135	220	220
		3 - 15	90 - 450				
65A	2 1/2B	1.2 - 6	60 - 300	10	155	260	220
		6 - 30	180 - 900				
80A	3B	1.6 - 8	120 - 600	10	170	300	
		8 - 40	240 - 1200				
100A	4B	3 - 15	180 - 900	10	195	330	
		16 - 80	400 - 2000				
125A	5B	4 - 20	200 - 1000	10	220	380	
		20 - 100	600 - 3000				
150A	6B	6 - 30	240 - 1200	10	250	480	
		30 - 150	900 - 4500				
200A	8B	12 - 60	300 - 1500	10	300	650	
		60 - 300	1800 - 9000				
250A	10B	16 - 80	600 - 3000	10	350	680	
		80 - 400	2400 - 12000				
300A	12B	20 - 100	900 - 4500	10	400	720	
		100 - 500	3000 - 15000				



PART LIST

NO	NAME	MATERIAL		
		NO.1	NO.2	NO.3
1	Body	SPP	SUS304	SUS316
2	Flapper	SS41	SUS304	SUS316
3	Shaft	SS41	SUS304	SUS316
4	Spring	SUS304	SUS304	SUS316
5	Packing	NBR, EPDM, VITON, TEFLON		
6	Sight Glass	GLASS (H.S.)		
7	Cover	AL2		



Flowmeter Product Directory

MODEL : ASB



ASB-1-1-J

FEATURES

- 본제품은 움직일 수 있는 물체를 삽입하여 (Ball, Flag 등) 그 움직임으로 유체흐름 상태를 확인하고 감시하는 유량계이다.
- 압력손실이 극히 적으며 불투명액체, 가스측정에 더욱 적합하다.
- 2 종류의 물체를 삽입하면 2 종류 이상의 유체 흐름을 측정할 수 있다.

SPECIFICATION

CON'N	SIZE	MAT'L	PRESS.	TEMP.	ACCURACY
FLANGE	15A-300A	STEEL	MAX 10kgf/cm ²	MAX 120°C	FS.±1.0%
		SUS304			
SCREW	15A-65A	SUS316			

MODEL CODE

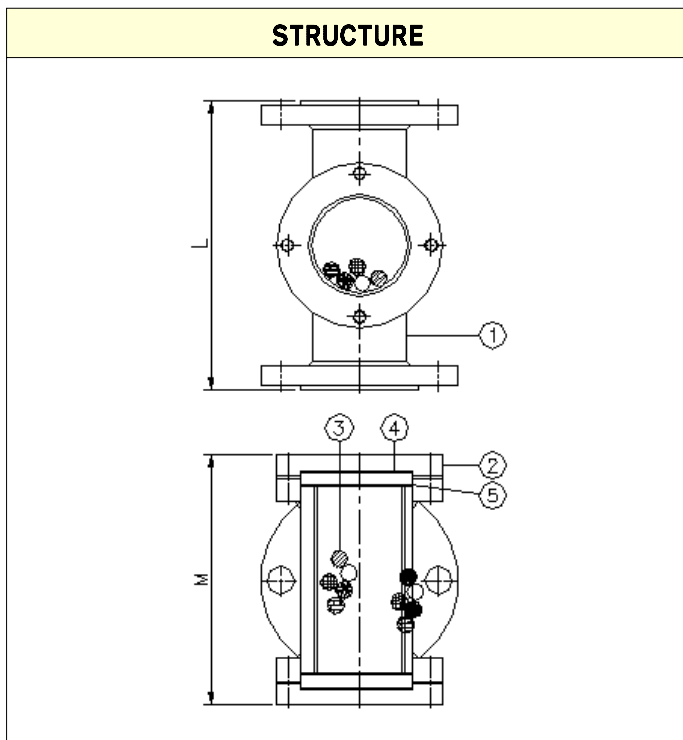
ASB	-	□	-	□	-	□	DESCRIPTION
FLOW DIRECTION		1					BOTTOM - TOP
		5					SIDE - SIDE
		6					TOP - BOTTOM
MATERIAL				1			STEEL
				2			SUS304
				3			SUS316
				O			OTHER
CONNECTION						J	JIS 10K RF (FF)
						A	ANSI 150# RF (FF)
						D	DIN PN10/16
						P	PT(Male / Female)
						N	NPT(Male / Female)
						O	OTHER



Flowmeter Product Directory

MODEL : ASB

FLOW RATE							
SIZE	DIVIDE	ALLOW RANGE		LIMIT kgf/cm ²	LENGTH (mm)		
		H ₂ O (m ³ /h)	AIR (N ^m /h) 0.5 kgf/cm ² G · 20℃		M	L	
				FLANGE		SCREW	
15A	1/2B	0.1 - 0.5	6 - 30	10	100	220	150
		0.4 - 2	12 - 60				
20A	3/4B	0.1 - 0.5	6 - 30	10	100	220	160
		0.4 - 2	12 - 60				
25A	1B	0.2 - 1	12 - 60	10	110	220	180
		1 - 5	30 - 150				
32A	1 1/4B	0.2 - 1	12 - 60	10	120	220	200
		1 - 5	30 - 150				
40A	1 1/2B	0.4 - 2	16 - 80	10	125	220	200
		2 - 10	60 - 300				
50A	2B	0.6 - 3	20 - 100	10	135	220	220
		3 - 15	90 - 450				
65A	2 1/2B	1.2 - 6	60 - 300	10	155	260	220
		6 - 30	180 - 900				
80A	3B	1.6 - 8	120 - 600	10	170	300	
		8 - 40	240 - 1200				
100A	4B	3 - 15	180 - 900	10	195	330	
		16 - 80	400 - 2000				
125A	5B	4 - 20	200 - 1000	10	220	380	
		20 - 100	600 - 3000				
150A	6B	6 - 30	240 - 1200	10	250	480	
		30 - 150	900 - 4500				
200A	8B	12 - 60	300 - 1500	10	300	650	
		60 - 300	1800 - 9000				
250A	10B	16 - 80	600 - 3000	10	350	680	
		80 - 400	2400 - 12000				
300A	12B	20 - 100	900 - 4500	10	400	720	
		100 - 500	3000 - 15000				



PART LIST

NO	NAME	MATERIAL		
		NO.1	NO.2	NO.3
1	Body	SPP	SUS304	SUS316
2	Cover	AL2		
3	Flow Sensor	GLASS, PE, NYLON, ABS		
4	Sight Glass	GLASS (H.S)		
5	Packing	NBR, EPDM, VITON, TEFLON		



Flowmeter Product Directory

MODEL : ASB



FEATURES

- 본제품은 움직일 수 있는 물체를 삽입하여 (Flag) 그 움직임으로 유체흐름 상태를 확인하고 감시하는 유량계이다.
- 압력손실이 극히 적으며 불투명액체, 가스측정에 더욱 적합하다.

SPECIFICATION

CON`N	SIZE	MAT`L	PRESS.	TEMP.	ACCURACY
FLANGE	15A-300A	STEEL	MAX 10kgf/cm ²	MAX 120℃	FS.±1.0%
		SUS304			
SCREW	15A-65A	SUS316			

ASB-6-3-J

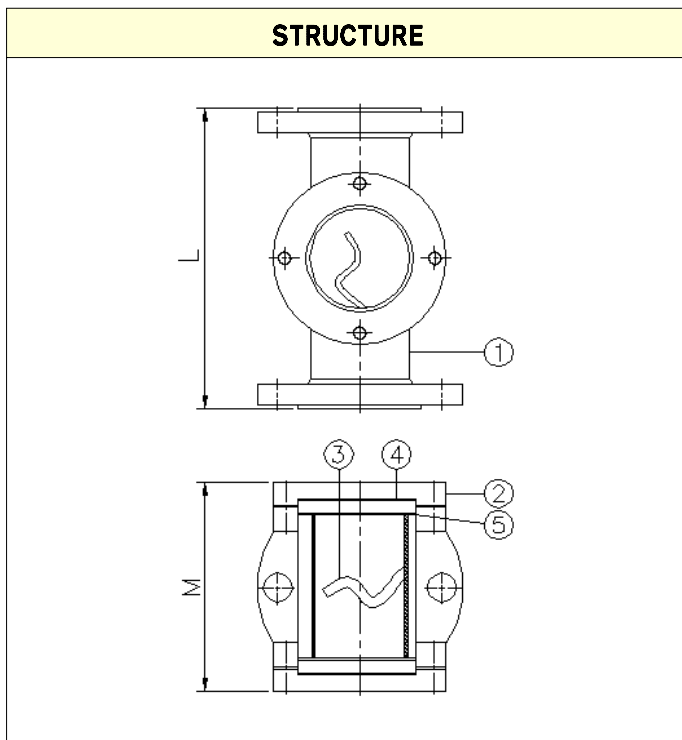
MODEL CODE							
ASB	-	<input type="checkbox"/>	-	<input type="checkbox"/>	-	<input type="checkbox"/>	DESCRIPTION
FLOW DIRECTION		1					BOTTOM - TOP
		5					SIDE - SIDE
		6					TOP - BOTTOM
MATERIAL				1			STEEL
				2			SUS304
				3			SUS316
				0			OTHER
CONNECTION						J	JIS 10K RF (FF)
						A	ANSI 150# RF (FF)
						D	DIN PN10/16
						P	PT(Male / Female)
						N	NPT(Male / Female)
						O	OTHER



Flowmeter Product Directory

MODEL : ASB

FLOW RATE							
SIZE	DIVIDE	ALLOW RANGE		LIMIT	LENGTH (mm)		
		H ₂ O (m ³ /h)	AIR (N ^m /h) 0.5 kgf/cm ² G · 20℃		kgf/cm ²	M	L
				FLANGE			SCREW
15A	1/2B	0.1 - 0.5	6 - 30	10	100	220	150
		0.4 - 2	12 - 60				
20A	3/4B	0.1 - 0.5	6 - 30	10	100	220	160
		0.4 - 2	12 - 60				
25A	1B	0.2 - 1	12 - 60	10	110	220	180
		1 - 5	30 - 150				
32A	1 1/4B	0.2 - 1	12 - 60	10	120	220	200
		1 - 5	30 - 150				
40A	1 1/2B	0.4 - 2	16 - 80	10	125	220	200
		2 - 10	60 - 300				
50A	2B	0.6 - 3	20 - 100	10	135	220	220
		3 - 15	90 - 450				
65A	2 1/2B	1.2 - 6	60 - 300	10	155	260	220
		6 - 30	180 - 900				
80A	3B	1.6 - 8	120 - 600	10	170	300	
		8 - 40	240 - 1200				
100A	4B	3 - 15	180 - 900	10	195	330	
		16 - 80	400 - 2000				
125A	5B	4 - 20	200 - 1000	10	220	380	
		20 - 100	600 - 3000				
150A	6B	6 - 30	240 - 1200	10	250	480	
		30 - 150	900 - 4500				
200A	8B	12 - 60	300 - 1500	10	300	650	
		60 - 300	1800 - 9000				
250A	10B	16 - 80	600 - 3000	10	350	680	
		80 - 400	2400 - 12000				
300A	12B	20 - 100	900 - 4500	10	400	720	
		100 - 500	3000 - 15000				



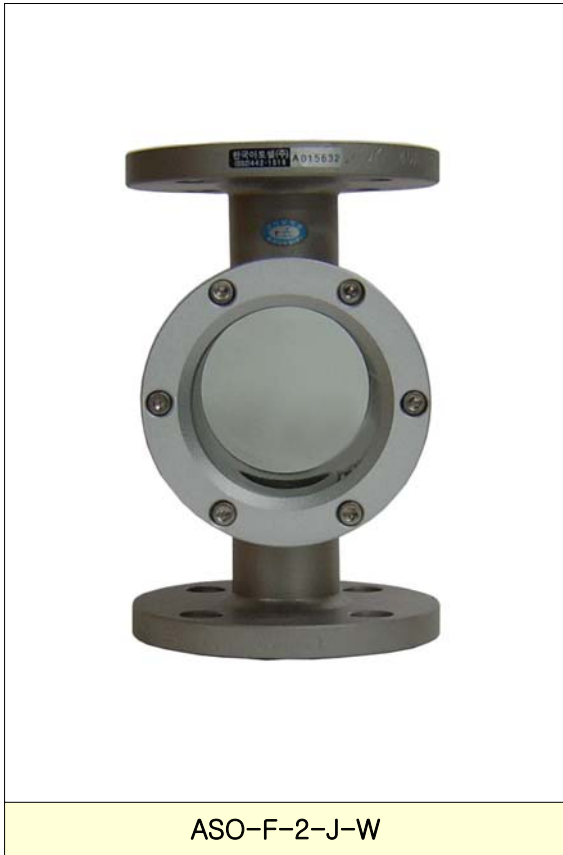
PART LIST

NO	NAME	MATERIAL		
		NO.1	NO.2	NO.3
1	Body	SPP	SUS304	SUS316
2	Cover	AL2		
3	Flag	POLIESTER, NYLON, PTFE		
4	Sight Glass	GLASS (H.S)		
5	Packing	NBR, EPDM, VITON, TEFLON		



Flowmeter Product Directory

MODEL : ASO



FEATURES

- 본제품은 투시되는 GLASS를 통하여 유체의 색깔, 기포 혼입상태 등 유체의 흐름상태를 관찰하는 유량계 이다.
- 구조가 간단해 다양한 재질, 형태로 제작 할 수 있다.
- 내부에 장애요소가 없기 때문에 응고성, 고점도 및 찌꺼기 등이 있는 유체사용에 최적이다.

SPECIFICATION

CON`N	SIZE	MAT`L	PRESS.	TEMP.	ACCURACY
FLANGE	15A-300A	STEEL	MAX 10kgf/cm ²	MAX 120℃	FS.±5%
		SUS304			
SCREW	15A-65A	SUS316			

ASO-F-2-J-W

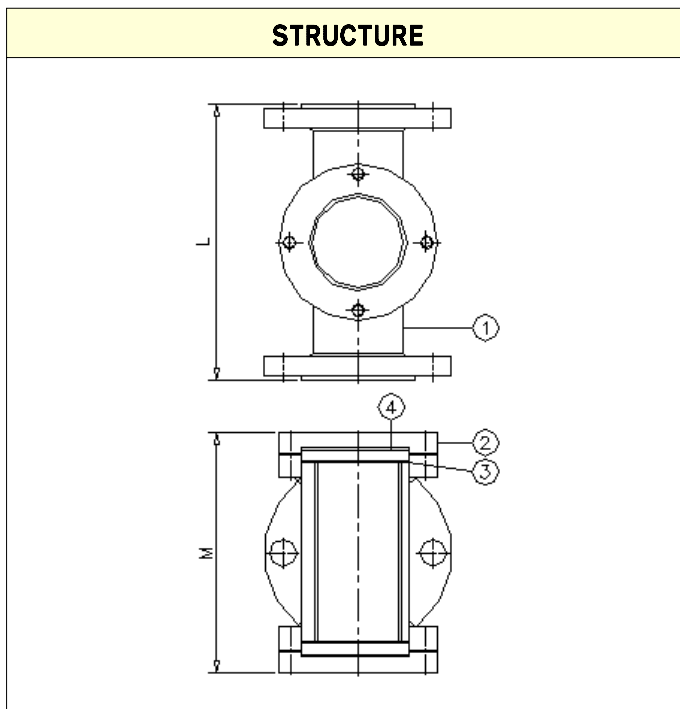
MODEL CODE											
ASO	-	□	-	□	-	□	-	□	DESCRIPTION		
FLOW DIRECTION		F							FREE		
MATERIAL				1					STEEL		
				2					SUS304		
				3					SUS316		
				0					OTHER		
CONNECTION						J			JIS 10K RF (FF)		
						A					ANSI 150# RF (FF)
						D					DIN PN10/16
						P					PT(Male / Female)
						N					NPT(Male / Female)
						O					OTHER
ACCESSORY								W	WITHOUT		
								V	VALVE (NEEDLE, BALL)		



Flowmeter Product Directory

MODEL : ASO

FLOW RATE							
SIZE \ DIVIDE		ALLOW RANGE		LIMIT	LENGTH (mm)		
		H ₂ O (m ³ /h)	AIR (Nm ³ /h)		M	L	
				0.5 kgf/cm ² G · 20°C		kgf/cm ²	FLANGE
15A	1/2B	0.1 - 0.5	6 - 30	10	100	220	150
		0.4 - 2	12 - 60				
20A	3/4B	0.1 - 0.5	6 - 30	10	100	220	160
		0.4 - 2	12 - 60				
25A	1B	0.2 - 1	12 - 60	10	110	220	180
		1 - 5	30 - 150				
32A	1 1/4B	0.2 - 1	12 - 60	8	120	220	200
		1 - 5	30 - 150				
40A	1 1/2B	0.4 - 2	16 - 80	8	125	220	200
		2 - 10	60 - 300				
50A	2B	0.6 - 3	20 - 100	8	135	220	220
		3 - 15	90 - 450				
65A	2 1/2B	1.2 - 6	60 - 300	8	155	260	220
		6 - 30	180 - 900				
80A	3B	1.6 - 8	120 - 600	8	170	300	
		8 - 40	240 - 1200				
100A	4B	3 - 15	180 - 900	7	195	330	
		16 - 80	400 - 2000				
125A	5B	4 - 20	200 - 1000	7	220	380	
		20 - 100	600 - 3000				
150A	6B	6 - 30	240 - 1200	7	250	480	
		30 - 150	900 - 4500				
200A	8B	12 - 60	300 - 1500	6	300	650	
		60 - 300	1800 - 9000				
250A	10B	16 - 80	600 - 3000	6	350	680	
		80 - 400	2400 - 12000				
300A	12B	20 - 100	900 - 4500	6	400	720	
		100 - 500	3000 - 15000				



PART LIST

NO	NAME	MATERIAL		
		NO.1	NO.2	NO.3
1	Body	SPP	SUS304	SUS316
2	Cover	AL2		
3	Packing	NBR, EPDM, VITON, TEFLON		
4	Sight Glass	GLASS (H.S.)		



Flowmeter Product Directory

MODEL : AST



AST-1-2-P

FEATURES

- 본 제품은 불투명 유체에 사용 적합하도록 만들어 졌으나 내부와 외부의 세척으로 위생용 유체에도 사용 할 수 있다.
- 기계 냉각수의 흐름과 단수 확인 감시하는데 광범위하게 사용 된다. (사출성형기, 금형, 산업로, 모니터, 바이오 케미칼 라인등)

SPECIFICATION

CON'N	SIZE	MAT'L	PRESS.	TEMP.	ACCURACY
SCREW	10A~25A	SUS304	MAX 10kgf/cm ²	MAX 100℃	FS.±3.0%
		SUS316			

MODEL CODE

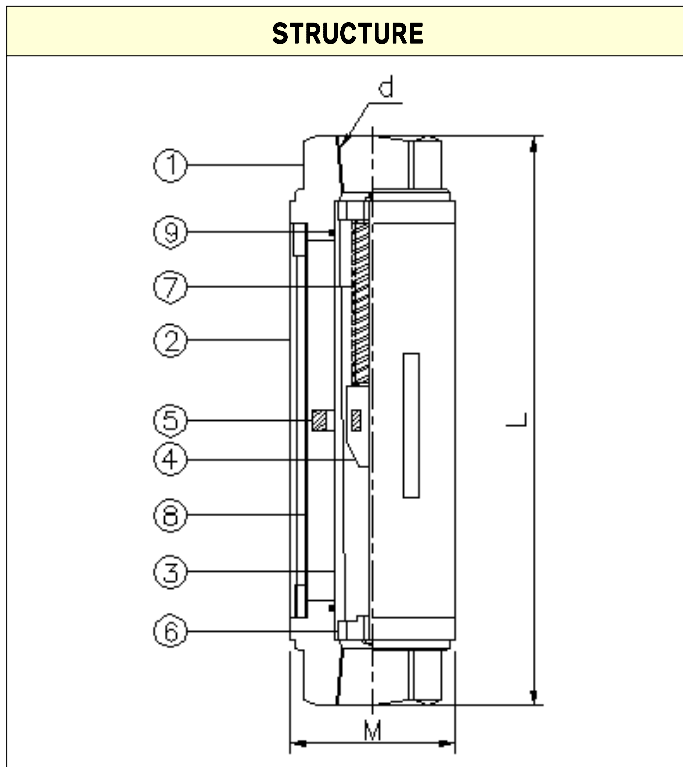
AST	-	<input type="checkbox"/>	-	<input type="checkbox"/>	-	<input type="checkbox"/>	DESCRIPTION
FLOW DIRECTION		1					BOTTOM - TOP
		5					SIDE - SIDE
MATERIAL				2			SUS304
				3			SUS316
				0			OTHER
CONNECTION						P	PT(Male / Female)
						N	NPT(Male / Female)
						O	OTHER



Flowmeter Product Directory

MODEL : AST

FLOW RATE					
DIVIDE	ALLOW RANGE		LIMIT	LENGTH (mm)	
	LIQUID (L/min)	GAS (NL/min)			M
FLOAT SIZE(d)	SUS304	SUS304	(kgf/cm ²)	M	L
10A	0.5 - 5	5 - 50	10	50	130
	1 - 10	10 - 100 15 - 150			150
15A	1.5 - 15	15 - 150	10	50	150
	2 - 20	20 - 200 30 - 300			200
20A	3 - 30	30 - 300	10	50 (75)	150
	4 - 40	40 - 400			200
	5 - 50	50 - 500 60 - 600			
25A	6 - 60	70 - 700	10	50 (75)	200
	7 - 70	80 - 800			250
	8 - 80	90 - 900			
		100 - 1000			



PART LIST

NO	NAME	MATERIAL	
		NO.2	NO.3
1	Body	SUS304	SUS316
2	Cover	SUS304	SUS304
3	Taper Tube	SUS304	SUS316
4	Float	SUS304	SUS316
5	Index	MAGNET	
6	Stopper	SUS304	
7	Spring	SUS304	SUS316
8	Sight Scale	ACRYL / PC	
9	Packing	NBR, VITON, TEFLON	



Flowmeter Product Directory

MODEL : ASD



ASD-3-9-P

FEATURES

- 본제품은 투시되는 GLASS를 통해 유체의 색깔, 기포 혼입 상태 등 유체의 흐름상태를 관찰하는 유량계이다.
- 구조가 간단하여 다양한 재질, 형태로 제작 할 수 있다.
- 내부에 장애 요소가 없기 때문에 어떠한 유체에도 적용 할 수 있다.
- 주 공급배관에서 보조배관으로 유체를 이송 분배 시킬 수 있으며 밸브를 통해 유량을 조절 할 수 있다.

SPECIFICATION

CON'N	SIZE	MAT'L	PRESS.	TEMP.	ACCURACY
SCREW	AO1~AO12	AL6061	MAX 20kgf/cm ²	MAX 120℃	FS.±1.0%
		SUS304			
		SUS316			

MODEL CODE

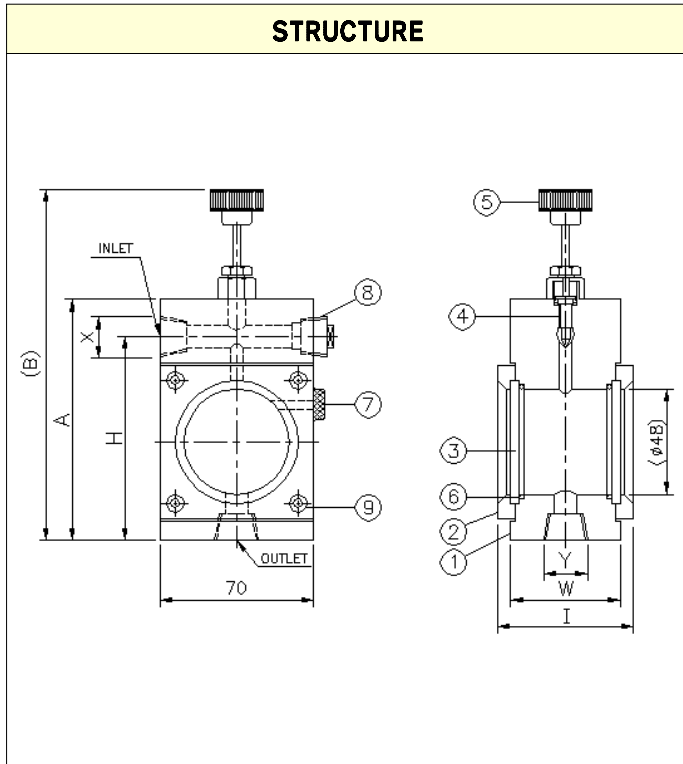
ASD	-	<input type="checkbox"/>	-	<input type="checkbox"/>	-	<input type="checkbox"/>	DESCRIPTION
FLOW DIRECTION		3					TOP SIDE - BOTTOM
		2					BOTTOM - TOP SIDE
		5					SIDE - SIDE
MATERIAL				9			AL
				2			SUS 304
				3			SUS 316
				0			OTHER
CONNECTION						P	PT(Male / Female)
						N	NPT(Male / Female)
						O	OTHER



Flowmeter Product Directory

MODEL : ASD

FLOW RATE (SP.GR 0.8 BASE)									
DIVIDE SIZE	ALLOW RANGE	LIMIT	DIMENSION (mm)						
	L / min	kgf/cm ²	X(inch)	Y(inch)	A	(B)	I	W	H
AO-1	0.5 - 3.0	20	1/4	1/2	110	150	52	40	90
AO-2	0.5 - 3.0	20	3/8	1/2	110	150	52	40	90
AO-3	0.5 - 5.0	20	1/2	1/2	110	150	52	40	90
AO-4	0.5 - 5.0	20	1/4	3/4	110	160	62	50	90
AO-5	0.5 - 5.0	20	3/8	3/4	110	160	62	50	90
AO-6	0.5 - 5.0	20	1/2	3/4	110	160	62	50	90
AO-7	0.5 - 5.0	20	3/4	3/4	110	160	62	50	90
AO-8	0.5 - 5.0	20	1/4	1	110	175	62	50	90
AO-9	0.5 - 6.0	15	3/8	1	110	175	62	50	90
AO-10	0.5 - 7.0	15	1/2	1	110	175	62	50	90
AO-11	0.5 - 8.0	15	3/4	1	110	175	62	50	90
AO-12	0.5 - 10	15	1	1	125	185	62	50	100



PART LIST

NO	NAME	MATERIAL		
		NO.9	NO.2	NO.3
1	Body	AL	SUS304	SUS316
2	Cover	AL		
3	Sight	GLASS (H.S)		
4	Valve(S)	BSBM	SUS304	SUS316
5	Knob	AL / BSBM		
6	Packing	NBR, EPDM, VITON, TEFLON		
7	Vent plug	BSBM	SUS304	SUS316
8	Moving plug	BSBM	SUS304	SUS316
9	Bolt(L)	SS	SUS304	SUS304



Flowmeter Product Directory

MODEL : ASTA



ASTA-1-3-P-1

FEATURES

·본 제품은 순간유량 측정용(AST)에 접점(Alarm Contact) 기능을 추가한 제품으로 접점신호는 1점점과 2 점점으로 구분 한다.

SPECIFICATION

CON'N	SIZE	MAT'L	PRESS.	TEMP.	ACCURACY
SCREW	8A-25A	SUS 304/316	MAX. 10kgf/cm ²	MAX. 80°C	FS ±3.0%

ALARM CONTACT

CAPACITY	AC220V 0.5A / DC24V 0.05A
CONTACT OUTPUT	HIGH OR LOW SET ALARM
CONTACT TYPE	SENSOR SELF HOLDING FORM
CONTACT RATE	SPST RELAY OUTPUT
CABLE CODE	0.4m (10m AVAILABLE)
AMBIENT TEMP	-10 ~80°C

MODEL CODE

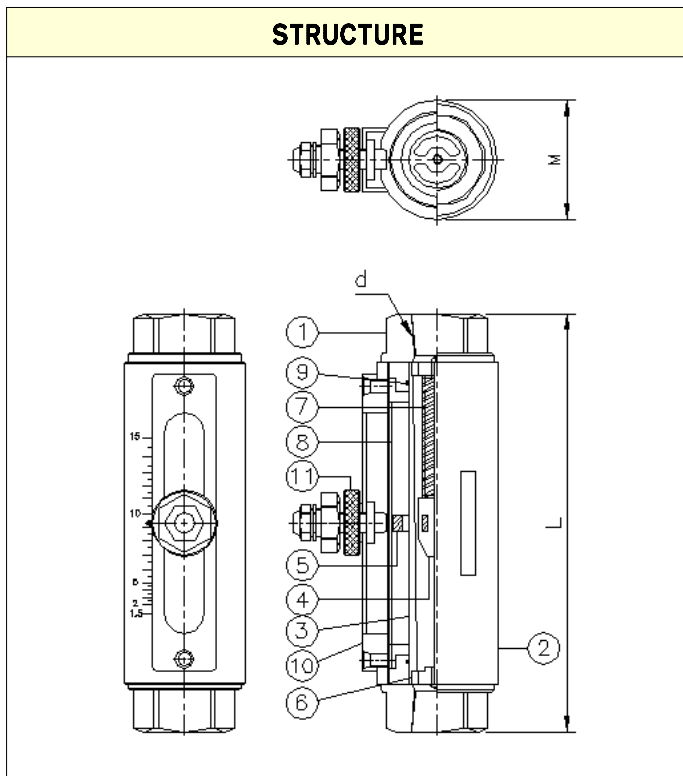
ASTA	-	<input type="checkbox"/>	-	<input type="checkbox"/>	-	<input type="checkbox"/>	-	<input type="checkbox"/>	DESCRIPTION
FLOW DIRECTION		1							BOTTOM - TOP
		5							SIDE - SIDE
MATERIAL			2						SUS304
			3						SUS316
			0						OTHER
CONNECTION						P			PT(Male / Female)
						N			NPT(Male / Female)
						0			OTHER
CONTACT								1	ONE POINT ALARM
								2	TWO POINT ALARM



Flowmeter Product Directory

MODEL : ASTA

FLOW RATE					
DIVIDE	ALLOW RANGE		LIMIT (kgf/cm ²)	LENGTH (mm)	
	LIQUID (L/min)	GAS (NL/min)		M	L
FLOAT SIZE(d)	SUS304	SUS304			
10A	0.5 - 5	5 - 50	10	50	130
	1 - 10	10 - 100			150
15A	1.5 - 15	15 - 150	10	50	150
	2 - 20	20 - 200			
		30 - 300			
20A	3 - 30	30 - 300	10	50 (75)	150
	4 - 40	40 - 400			200
	5 - 50	50 - 500			
		60 - 600			
25A	6 - 60	70 - 700	8	50 (75)	200
	7 - 70	80 - 800			
		90 - 900			
	8 - 80	100 - 1000			



PART LIST

NO	NAME	MATERIAL	
		NO.2	NO.3
1	Body	SUS304	SUS316
2	Cover	SUS304	SUS304
3	Taper Tube	SUS304	SUS316
4	Float	SUS304	SUS316
5	Index	MAGNET	
6	Stopper	SUS304	SUS316
7	Spring	SUS304	SUS316
8	Sight Scale	ACRYL, PC	
9	Packing	NBR, VITON, TEFLON	
10	Support	BSBM	
11	Sensor	AL + CABLE	



Flowmeter Product Directory

MODEL : ASOL



ASOL-1-3-J-W

FEATURES

- 본제품은 투시되는 GLASS를 통하여 유체의 색깔, 기포 혼입상태 등 유체의 흐름상태를 관찰하는 유량계 이다.
- 구조가 간단해 다양한 재질, 형태로 제작 할 수 있다.
- 내부에 장애요소가 없기 때문에 응고성, 고점도 및 찌꺼기 등이 있는 유체사용에 최적이다.

SPECIFICATION

CON`N	SIZE	MAT`L	PRESS.	TEMP.	ACCURACY
FLANGE	15A-100A	STEEL	MAX 10kgf/cm ²	MAX 120℃	FS.±1.0%
		SUS304			
SCREW	15A-65A	SUS316			

MODEL CODE

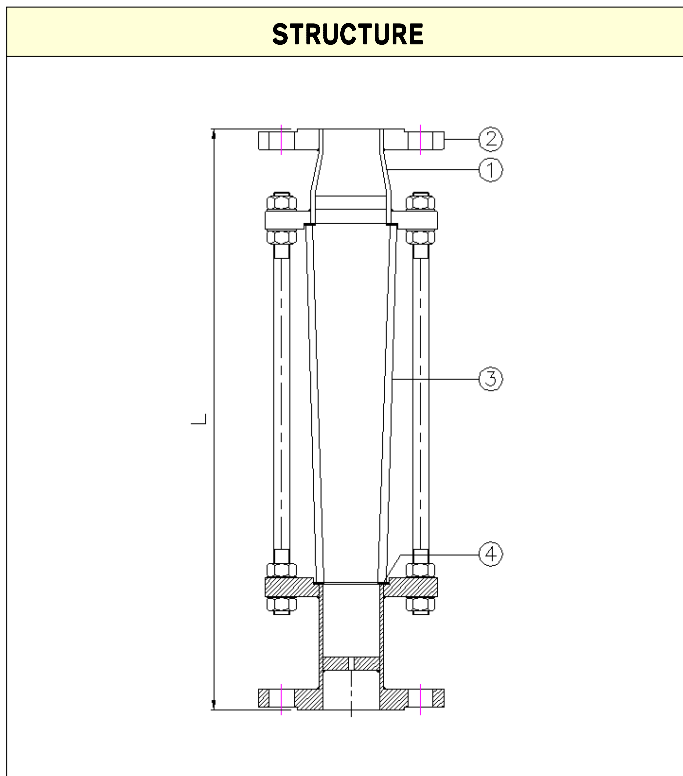
ASOL	-	<input type="checkbox"/>	-	<input type="checkbox"/>	-	<input type="checkbox"/>	-	<input type="checkbox"/>	DESCRIPTION
FLOW DIRECTION		1							BOTTOM - TOP
		5							SIDE - SIDE
		6							TOP - BOTTOM
MATERIAL			1						STEEL
			2						SUS304
			3						SUS316
			O						OTHER
CONNECTION					J				JIS 10K RF (FF)
					A				ANSI 150# RF (FF)
					D				DIN PN10/16
					P				PT(Male / Female)
					N				NPT(Male / Female)
					O				OTHER
CONTACT							W		WITHOUT
							1		1POINT ALARM
							2		2POINT ALARM



Flowmeter Product Directory

MODEL : ASOL

FLOW RATE								
SIZE	STANDARD		GENERAL				LIMIT	LENGTH L
	H ₂ O (m ³ /h)		LIQUID (m ³ /h)		AIR (Nm ³ /h)			
15A	0.1~1	0.08~0.8	0.03~0.3	0.03~0.3	0.3~3	0.3~3	10	360
			0.2~2	0.15~1.5	1.2~12	2~20		
20A	0.15~1.5	0.12~1.2	0.03~0.3	0.03~0.3	0.3~3	0.3~3	10	360
			0.2~2	0.15~1.5	2~20	3~30		
25A	0.35~3.5	0.25~2.5	0.15~1.5	0.1~1.0	1~10	1.5~15	10	400
			0.5~5	0.35~3.5	4~40	6~60		
32A	0.6~6	0.45~4.5	0.3~3	0.25~2.5	2~20	3~30	10	420
			0.7~7	0.6~6	7~70	10~100		
40A	1~10	0.8~8	0.35~3.5	0.3~3	3~30	4.5~45	8	440
			1.2~12	1.0~10	12~120	15~150		
50A	1.5~15	1.2~12	1~10	0.8~8	3.5~35	5~50	8	480
			2~20	1.5~15	15~150	20~200		
65A	2.5~25	2~20	1.5~15	1.2~12	6~60	9~90	6	550
			3~30	2.5~25	30~300	40~400		
80A	4~40	3~30	2~20	1.6~16	10~100	15~150	5	620
			5~50	4~40	50~500	70~700		
100A	6~60	5~50	5~50	3~30	15~150	20~200	5	740
			7~70	6~60	70~700	100~1000		



PART LIST

NO	NAME	MATERIAL		
		NO.1	NO.2	NO.3
1	Body	SPP	SUS304	SUS316
2	Flange	SPP	SUS304	SUS316
3	Taper Tube	PYREX GLASS		
4	Packing	NBR, EPDM, VITON, TEFLON		



Flowmeter Product Directory

MODEL : ASOC



FEATURES

- 본 제품은 회전체(Turbine)를 삽입하여 그 움직임으로 유체흐름 상태를 확인하고 감시하는 유량계이다.
- 압력손실이 극히 적으며 불투명액체, 가스측정에 더욱 적합하다.

SPECIFICATION

CON'N	SIZE	MAT'L	PRESS.	TEMP.	ACCURACY
FLANGE	15A~50A 1/4~2"	STEEL	MAX 10kgf/cm ²	MAX 120°C	FS.±1.0%
SCREW		SUS304 SUS316			

ASOC-F-2-P-W

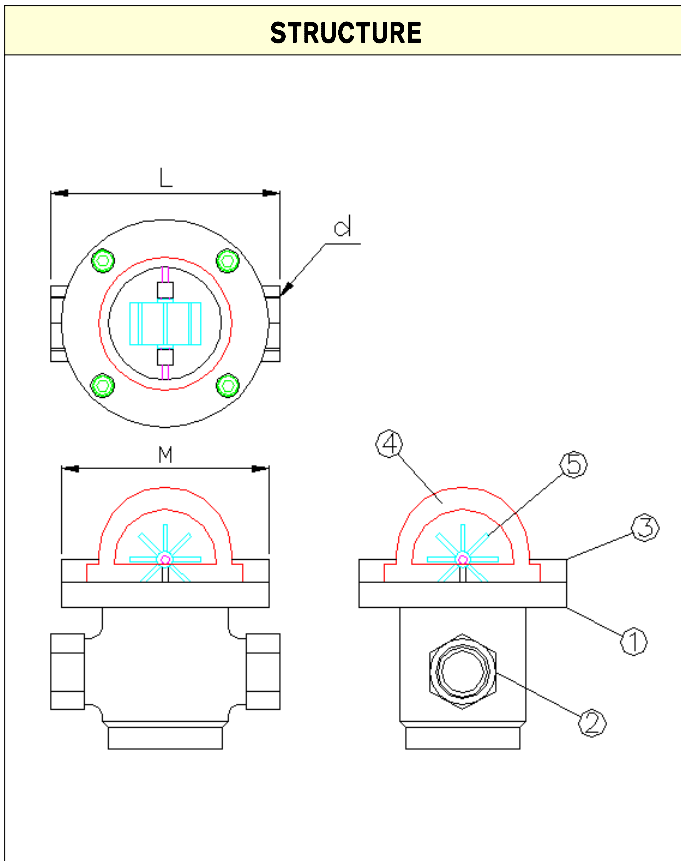
MODEL CODE										
ASOC	-	□	-	□	-	□	-	□	DESCRIPTION	
FLOW DIRECTION		F							FREE	
MATERIAL				1					STEEL	
				2					SUS304	
				3					SUS316	
				0					OTHER	
CONNECTION						J			JIS 10K RF (FF)	
						A				ANSI 150# RF (FF)
						D				DIN PN10/16
						P				PT(Male / Female)
						N				NPT(Male / Female)
						O				OTHER
ACCESSORY								W	WITHOUT	
								V	VALVE (NEEDLE, BALL)	



Flowmeter Product Directory

MODEL : ASOC

FLOW RATE							
SIZE(d)	DIVIDE	ALLOW RANGE		LIMIT	LENGTH (mm)		
		H ₂ O (m ³ /h)	AIR (N ^m /h) 0.5 kgf/cm ² G · 20℃	kgf/cm ²	M	L	
						FLANGE	SCREW
15A	1/2B	0.1 - 0.5	6 - 30	10	100	160	110
		0.4 - 2	12 - 60				~160
20A	3/4B	0.1 - 0.5	6 - 30	10	100	160	110
		0.4 - 2	12 - 60				~160
25A	1B	0.2 - 1	12 - 60	10	100	180	110
		1 - 5	30 - 150				~160
32A	1 1/4B	0.2 - 1	12 - 60	10	100	180	110
		1 - 5	30 - 150				~160
40A	1 1/2B	0.4 - 2	16 - 80	10	100	200	160
		2 - 10	60 - 300				
50A	2B	0.6 - 3	20 - 100	10	100	220	160
		3 - 15	90 - 450				



PART LIST				
NO	NAME	MATERIAL		
		NO.1	NO.2	NO.3
1	Body	SGP	SUS304	SUS316
2	Socket	SS41	SUS304	SUS316
3	Cover	AL	AL	SUS316
4	Sight Glass	GLASS (H.S)		
5	Flow Sensor	ABS		



Flowmeter Product Directory

MODEL : ASG



ASG-5-1-P-V

FEATURES

- 본 제품은 극히 미소량을 감시하거나 측정할 경우 적합하다.
- 유체의 흘러가는 양을 관찰할 수 있고 유량조절용 밸브에 의해 유량의 크기를 조절할 수 있으며 부가 사양으로 유량표기를 선택할 수 있다.
- 유체 흐름 방향에 제한이 없으며 특히 점도가 큰 액체에서도 사용 가능하다.

SPECIFICATION

CON'N	SIZE	MAT'L	PRESS.	TEMP.	ACCURACY
SCREW	1/8" - 1"	STEEL	MAX 20kgf/cm ²	MAX 120℃	FS ±2.5%
		SUS304			
		SUS316			

MODEL CODE

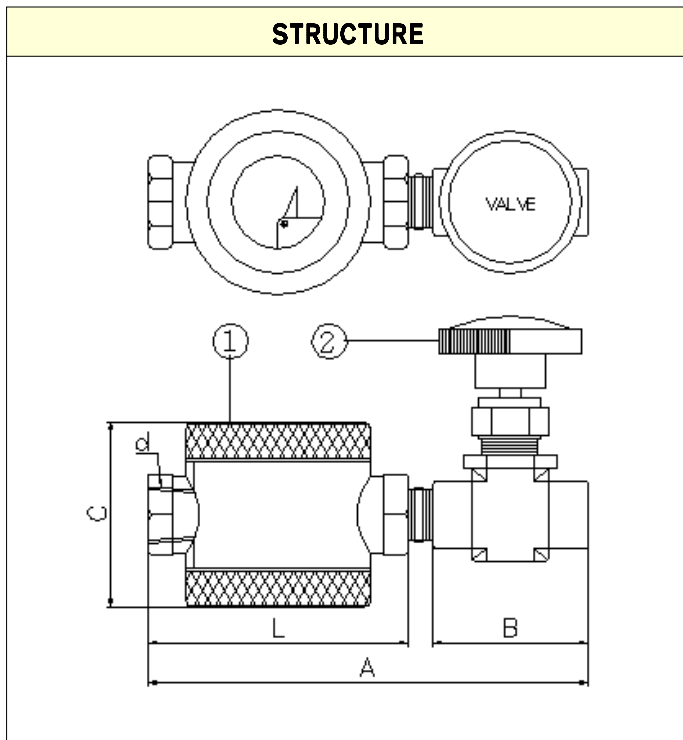
ASG	-	□	-	□	-	□			DESCRIPTION
FLOW DIRECTION		1							BOTTOM - TOP
		5							SIDE - SIDE
		6							TOP - BOTTOM
MATERIAL				1					STEEL
				2					SUS304
				3					SUS316
				0					OTHER
CONNECTION						P			PT(Male / Female)
						N			NPT(Male / Female)
						0			OTHER
ACCESSORY							V		VALVE (NEEDLE, BALL)
							0		OTHER



Flowmeter Product Directory

MODEL : ASG

FLOW RATE								
SIZE(d)	DIVIDE	ALLOW RANGE		LIMIT kgf/cm ²	LENGTH (mm)			
		H ₂ O (l/min)	AIR (N ^m /h) 0.5 kgf/cm ² G · 20°C		L	B	A	C
6A	1/8B	1-5	2-10	10	70	38	120	60
		1-5	4-20					
8A	1/4B	1-5	2-10	10	70	38	120	60
		2-10	5-25					
10A	3/8B	2-10	2-10	10	70	47	135	60
		3-15	6-30					
15A	1/2B	3-15	6-30	10	80	62	160	80
		5-25	10-50					
20A	3/4B	4-20	8-40	10	90	70	180	90
		6-30	12-60					
25A	1B	8-40	12-60	10	100	80	200	100
		14-70	30-150					



PART LIST

NO	NAME	MATERIAL		
		NO.1	NO.2	NO.3
1	Indicator	SS41	SUS304	SUS316
2	Valve	BRASS	SUS304	SUS316



Flowmeter Product Directory

MODEL : ASG501



ASG501-5-1-J

FEATURES

- 모든 유체(액체, 기체 및 스팀)측정이 가능하며 슬러지 및 불투명한 액체 측정에 적합한 유량계이다.
(공업용수, 폐수, 도금용액, 각종 오일류, 혼합용 가스, 소화가스, 가성소다,)
- 유체의 흐름방향은 어느 방향이든지 자유롭게 선정할 수 있다. (주문 시 방향 협의)

SPECIFICATION

CON'N	SIZE	MAT`L	PRESS.	TEMP.	ACCURACY
FLANGE	15A-100A	STEEL	ST	10kgf/cm2	ST 100℃
		SUS304			
SCREW	15A-65A	SUS316	SP	20kgf/cm2	SP 200℃

MODEL CODE

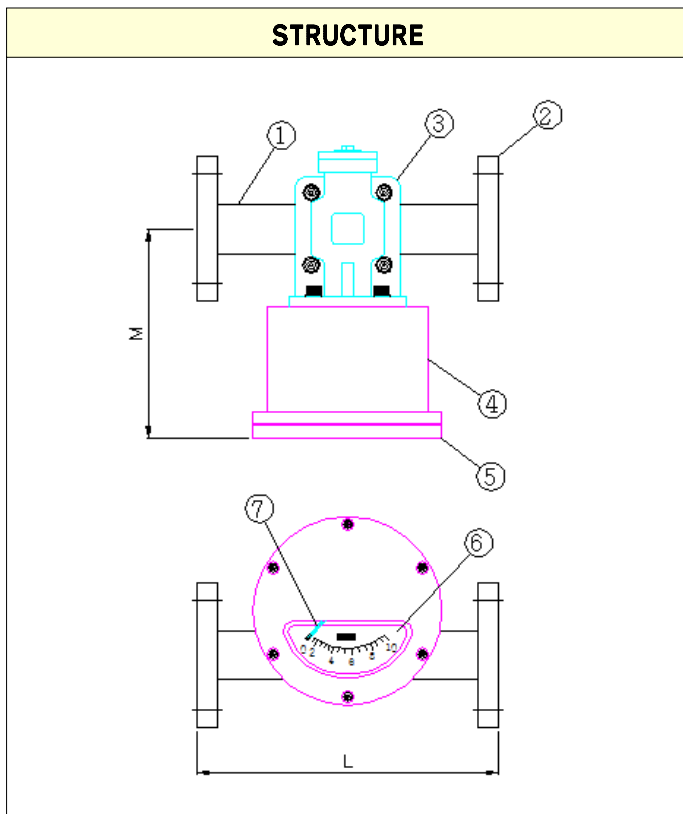
ASG501	-	<input type="checkbox"/>	-	<input type="checkbox"/>	-	<input type="checkbox"/>	DESCRIPTION
FLOW DIRECTION	1						BOTTOM - TOP
	5						SIDE - SIDE
	6						TOP - BOTTOM
MATERIAL	1						STEEL
	2						SUS304
	3						SUS316
	0						OTHER
CONNECTION	J						JIS 10K RF (FF)
	A						ANSI 150# RF (FF)
	D						DIN PN10/16
	P						PT(Male / Female)
	N						NPT(Male / Female)
	O						OTHER



Flowmeter Product Directory

MODEL : ASG501

FLOW RATE							
SIZE	DIVIDE	ALLOW RANGE			DIMENSION (mm)		
		H ₂ O (m ³ /h)	AIR (Nm ³ /h) 0.5 kgf/cm ² G · 20°C	STEAM (kg/h) 3 kgf/cm ² G	M	L	
						FLANGE	SCREW
15A	1/2B	0.1 - 0.5	6 - 30	10 - 50	150	220	180
		0.4 - 2	12 - 60	20 - 100			
20A	3/4B	0.1 - 0.5	6 - 30	10 - 50	150	220	180
		0.4 - 2	12 - 60	20 - 100			
25A	1B	0.2 - 1	12 - 60	10 - 50	150	220	180
		1 - 5	30 - 150	40 - 200			
32A	1 1/4B	0.2 - 1	12 - 60	10 - 50	150	220	200
		1 - 5	30 - 150	40 - 200			
40A	1 1/2B	0.4 - 2	16 - 80	20 - 100	190	220	200
		2 - 10	60 - 300	80 - 400			
50A	2B	0.6 - 3	20 - 100	20 - 100	190	220	220
		3 - 15	90 - 450	120 - 600			
65A	2 1/2B	1.2 - 6	60 - 300	80 - 400	190	260	220
		6 - 30	180 - 900	240 - 1200			
80A	3B	1.6 - 8	120 - 600	100 - 500	190	300	
		8 - 40	240 - 1200	400 - 2000			
100A	4B	3 - 15	180 - 900	200 - 1000	190	330	
		16 - 80	400 - 2000	700 - 3500			



PART LIST

NO	NAME	MATERIAL		
		NO.1	NO.2	NO.3
1	Body	SGP	SUS304	SUS316
2	Flange	SS400	SUS304	SUS316
3	Measure Room	SUS304		SUS316
4	Case	AL2		
5	Cover	AL2		
6	Name Plate	AL1011		
7	Index	AL1011		



Flowmeter Product Directory

MODEL : ASG502



ASG502-1-1-J-1

FEATURES

·본 제품은 순간유량 측정용(ASS)에 접점(Alarm Contact) 기능을 추가한 제품으로 접점신호는 1점점과 2 점점으로 구분 한다.

·오일측정에 최적이다.(중유, 모타오일, 터빈유, 작동유등)

SPECIFICATION

CON'N	SIZE	MAT'L	PRESS.	TEMP.	ACCURACY
FLANGE	15-100A	STEEL	ST. 10kgf/cm ²	ST. 100℃	FS ±3.0%
		SUS304			
SCREW	15-65A	SUS316	SP. 20kgf/cm ²	SP. 200℃	

ALARM CONTACT

CAPACITY	AC 220V 10A
CONTACT OUTPUT	HIGH OR LOW SET ALARM
CONTACT TYPE	SENSOR SELF HOLDING FORM
CONTACT RATE	SPDT RELAY OUTPUT
CABLE ENTRY	PF 1/2" FEMALE
AMBIENT TEMP	-10 ~80℃

MODEL CODE

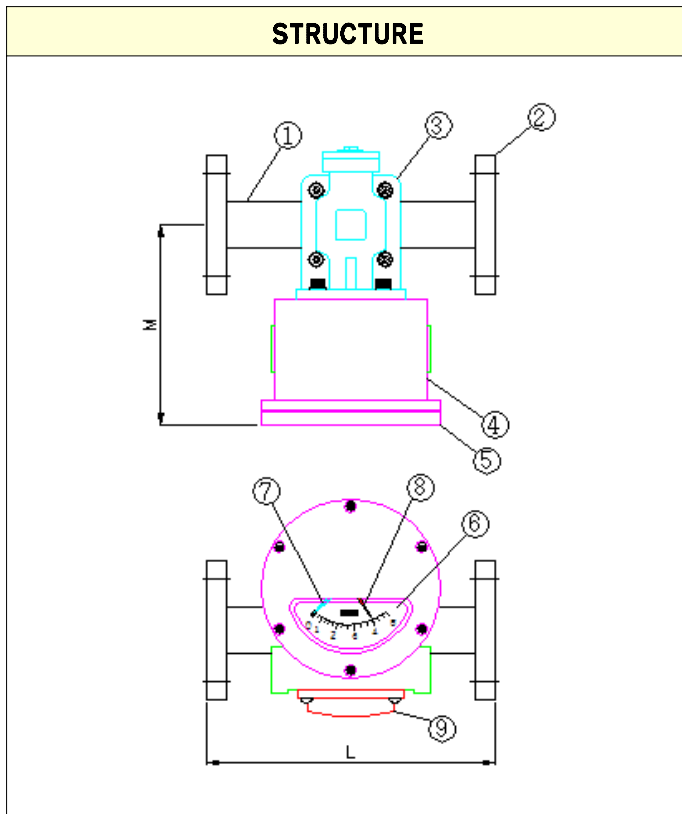
ASG502	-	<input type="checkbox"/>	-	<input type="checkbox"/>	-	<input type="checkbox"/>	-	<input type="checkbox"/>	DESCRIPTION
FLOW DIRECTION		1							BOTTOM - TOP
		5							SIDE - SIDE
		6							TOP - BOTTOM
MATERIAL				1					STEEL
				2					SUS304
				3					SUS316
				0					OTHER
CONNECTION						J			JIS 10K RF
						A			ANSI 150# RF
						D			DIN PN10/16
						P			PT(Male / Female)
						N			NPT(Male / Female)
						O			OTHER
CONTACT								1	ONE POINT ALARM
								2	TWO POINT ALARM



Flowmeter Product Directory

MODEL : ASG502

FLOW RATE							
SIZE	DIVIDE	ALLOW RANGE			DIMENSION (mm)		
		H ₂ O (m ³ /h)	AIR (Nm ³ /h) 0.5 kgf/cm ² G · 20°C	STEAM (kg/h) 3 kgf/cm ² G	M	L	
						FLANGE	SCREW
15A	1/2B	0.1 - 0.5	6 - 30	10 - 50	150	220	180
		0.4 - 2	12 - 60	20 - 100			
20A	3/4B	0.1 - 0.5	6 - 30	10 - 50	150	220	180
		0.4 - 2	12 - 60	20 - 100			
25A	1B	0.2 - 1	12 - 60	10 - 50	150	220	180
		1 - 5	30 - 150	40 - 200			
32A	1 1/4B	0.2 - 1	12 - 60	10 - 50	150	220	200
		1 - 5	30 - 150	40 - 200			
40A	1 1/2B	0.4 - 2	16 - 80	20 - 100	190	220	200
		2 - 10	60 - 300	80 - 400			
50A	2B	0.6 - 3	20 - 100	20 - 100	190	220	220
		3 - 15	90 - 450	120 - 600			
65A	2 1/2B	1.2 - 6	60 - 300	80 - 400	190	260	220
		6 - 30	180 - 900	240 - 1200			
80A	3B	1.6 - 8	120 - 600	100 - 500	190	300	
		8 - 40	240 - 1200	400 - 2000			
100A	4B	3 - 15	180 - 900	200 - 1000	190	330	
		16 - 80	400 - 2000	700 - 3500			



PART LIST

NO	NAME	MATERIAL		
		NO.1	NO.2	NO.3
1	Body	SGP	SUS304	SUS316
2	Flange	SS400	SUS304	SUS316
3	Measure Room	SUS304		SUS316
4	Case	AL2		
5	Cover	AL2		
6	Name Plate	AL1011		
7	Index	AL1011		
8	Alarm Sets	SUS304		
9	Terminal Room	AL(Package Std)		



Flowmeter Product Directory

MODEL : ASMA1



ASMA1-5-2-A-1

FEATURES

- 본 제품은 순간유량 측정과 경보, 접점(Alarm Signal) 기능을 부가한 제품으로 접점 신호는 1 점점과 2 점점으로 구분한다.
- 접점(Contact)을 설정하는 기구가 외부에서 조절(Adjust)할 수 있도록 설계 되어 경보 접점 위치를 수시로 이동하는 라인에서 사용하기에 최적이다.

SPECIFICATION

CON'N	SIZE	MAT'L	PRESS.	TEMP.	ACCURACY	
FLANGE	15A-300A	STEEL	ST	10kgf/cm2	ST 120℃	FS.±3.0%
		SUS304				
SCREW	15A-65A	SUS316	SP	40kgf/cm2	SP 200℃	

ALARM CONTACT

CAPACITY	AC 220V 0.5A / DC 24V 0.05A
CONTACT OUTPUT	HIGH OR LOW SET ALARM
CONTACT TYPE	SENSOR SELF HOLDING FORM
CONTACT RATE	SPST RELAY OUTPUT
AMBIENT TEMP	-10 ~ 80℃
CABLE ENTRY	PF 1/2" FEMALE

MODEL CODE

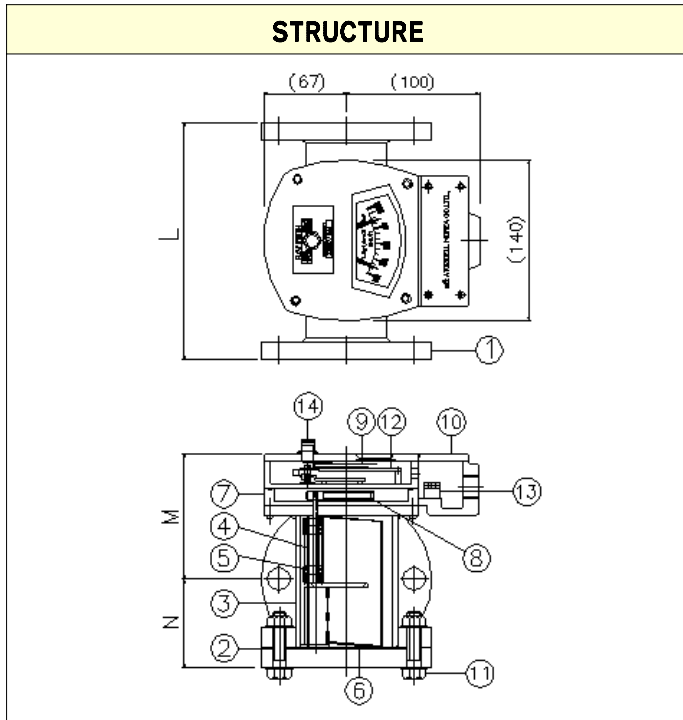
ASMA1	—	<input type="checkbox"/>	—	<input type="checkbox"/>	—	<input type="checkbox"/>	—	<input type="checkbox"/>	DESCRIPTION
FLOW DIRECTION		1							BOTTOM - TOP
		5							SIDE - SIDE
		6							TOP - BOTTOM
MATERIAL				1					STEEL
				2					SUS304
				3					SUS316
				0					OTHER
CONNECTION						J			JIS 10K RF (FF)
						A			ANSI 150# RF (FF)
						D			DIN PN10/16
						P			PT(Male / Female)
						N			NPT(Male / Female)
						O			OTHER
CONTACT								1	ONE POINT ALARM
								2	TWO POINT ALARM



Flowmeter Product Directory

MODEL : ASMA1

FLOW RATE								
SIZE	DIVIDE	ALLOW RANGE			LENGTH (mm)			
		H ₂ O (m ³ /h)	AIR (Nm ³ /h) 0.5 kgf/cm ² G · 20°C	STEAM (kg/h) 3 kgf/cm ² G	M	N	L	
							FLANGE	SCREW
15A	1/2B	0.1 - 0.5	6 - 30	10 - 50	85	55	220	150
		0.4 - 2	12 - 60	20 - 100				
20A	3/4B	0.1 - 0.5	6 - 30	10 - 50	85	55	220	160
		0.4 - 2	12 - 60	20 - 100				
25A	1B	0.2 - 1	12 - 60	10 - 50	90	60	220	180
		1 - 5	30 - 150	40 - 200				
32A	1 1/4B	0.2 - 1	12 - 60	10 - 50	90	60	220	200
		1 - 5	30 - 150	40 - 200				
40A	1 1/2B	0.4 - 2	16 - 80	20 - 100	95	65	220	200
		2 - 10	60 - 300	80 - 400				
50A	2B	0.6 - 3	20 - 100	20 - 100	100	70	220	220
		3 - 15	90 - 450	120 - 600				
65A	2 1/2B	1.2 - 6	60 - 300	80 - 400	110	80	260	220
		6 - 30	180 - 900	240 - 1200				
80A	3B	1.6 - 8	120 - 600	100 - 500	110	80	300	
		8 - 40	240 - 1200	400 - 2000				
100A	4B	3 - 15	180 - 900	200 - 1000	130	100	330	
		16 - 80	400 - 2000	700 - 3500				
125A	5B	4 - 20	200 - 1000	200 - 1000	140	110	380	
		20 - 100	600 - 3000	900 - 4500				
150A	6B	6 - 30	240 - 1200		200	150	480	
		30 - 150	900 - 4500					
200A	8B	12 - 60	300 - 1500		210	180	650	
		60 - 300	1800 - 9000					
250A	10B	16 - 80	600 - 3000		230	200	680	
		80 - 400	2400 - 12000					
300A	12B	20 - 100	900 - 4500		280	250	720	
		100 - 500	3000 - 15000					



PART LIST

NO	NAME	MATERIAL		
		NO.1	NO.2	NO.3
1	Flange	SS400	SUS304	SUS316
2	Packing	NBR, EPDM, VITON, TEFLON		
3	Body	SPP	SUS304	SUS316
4	Shaft	SS	SUS304	SUS316
5	Spring	SUS304	SUS304	SUS316
6	Flapper	SS	SUS304	SUS316
7	Magnet Room	SUS304	SUS304	SUS316
8	Magnet	ALNICO		
9	Index	AL		
10	Cover	AL2		
11	Bolt Nut	STEEL	SUS304	SUS316
12	Sensor	REED S/W (PACKAGE)		
13	Terminal	ABS		
14	Index Adjust	MF.STAND		



Flowmeter Product Directory

MODEL : ASS



FEATURES

- 공간이 충분치 않는 곳에 설치 할 수 있도록 소형화 되어 있는 유량계로 소규격, 소유량 측정에 적합하다.
- 오일측정에 최적이다.
(식용유, 중유, 모타오일, 터빈유, 등유)

SPECIFICATION

CON'N	SIZE	MAT'L	PRESS.	TEMP.	ACCURACY
FLANGE	15A-50A	STEEL	ST 10kgf/cm ²	ST 120℃	FS.±3.0%
		SUS304			
SCREW		SUS316	SP 40kgf/cm ²	SP 200℃	

ASS-5-1-J

MODEL CODE

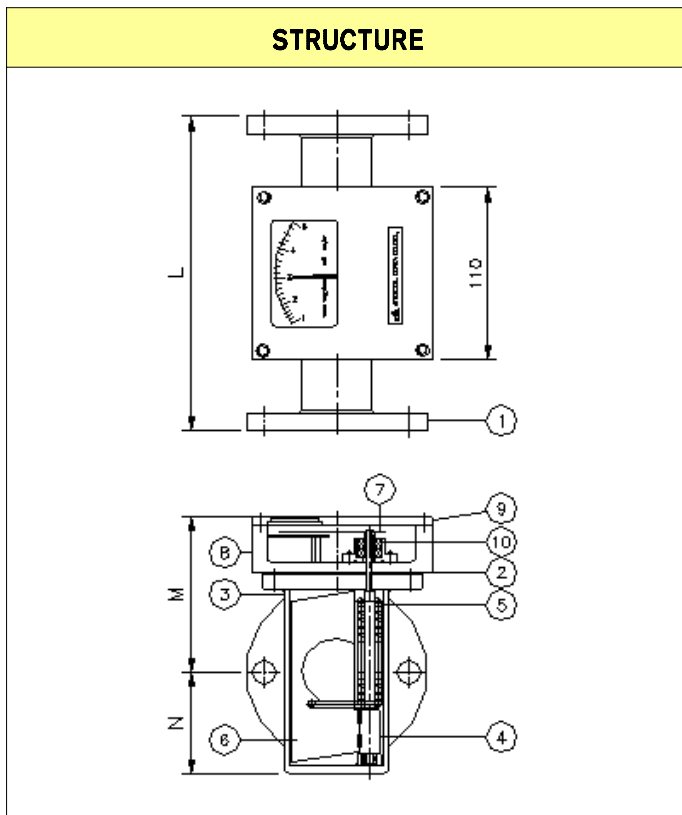
ASS	-	<input type="checkbox"/>	-	<input type="checkbox"/>	-	<input type="checkbox"/>	DESCRIPTION
FLOW DIRECTION	1						BOTTOM - TOP
	5						SIDE - SIDE
	6						TOP - BOTTOM
MATERIAL	1						STEEL
	2						SUS304
	3						SUS316
	0						OTHER
CONNECTION	J						JIS 10K RF (FF)
	A						ANSI 150# RF (FF)
	D						DIN PN10/16
	P						PT(Male / Female)
	N						NPT(Male / Female)
	O						OTHER



Flowmeter Product Directory

MODEL : ASS

FLOW RATE								
SIZE	DIVIDE	ALLOW RANGE			LENGTH (mm)			
		H ₂ O (m ³ /h)	AIR (Nm ³ /h) 0.5 kgf/cm ² G · 20°C	STEAM (kg/h) 3 kgf/cm ² G	M	N	L	
							FLANGE	SCREW
15A	1/2B	0.1 - 0.5	6 - 30	10 - 50	90 ⁺¹	30	220	150
		0.4 - 2	12 - 60	20 - 100	90 ⁻²			
20A	3/4B	0.1 - 0.5	6 - 30	10 - 50	90 ⁺¹	30	220	160
		0.4 - 2	12 - 60	20 - 100	90 ⁻²			
25A	1B	0.2 - 1	12 - 60	10 - 50	100 ⁺¹	40	220	180
		1 - 5	30 - 150	40 - 200	100 ⁻²			
32A	1 1/4B	0.2 - 1	12 - 60	10 - 50	100 ⁺¹	50	220	200
		1 - 5	30 - 150	40 - 200	100 ⁻²			
40A	1 1/2B	0.4 - 2	16 - 80	20 - 100	110 ⁺¹	50	220	200
		2 - 10	60 - 300	80 - 400	110 ⁻²			
50A	2B	0.6 - 3	20 - 100	20 - 100	120 ⁺¹	60	220	220
		3 - 15	90 - 450	120 - 600	120 ⁻²			



PART LIST

NO	NAME	MATERIAL		
		NO.1	NO.2	NO.3
1	Flange	SS400	SUS304	SUS316
2	Packing	NBR, EPDM, VITON, TEFLON		
3	Body	SPP	SUS304	SUS316
4	Shaft	SS	SUS304	SUS316
5	Spring	SUS304	SUS304	SUS316
6	Flapper	SS	SUS304	SUS316
7	Index	AL		
8	Case	AL2		
9	Cover	AL2		
10	Rotor	MF.STAND		



Flowmeter Product Directory

MODEL : ASSA



ASSA-5-3-J-2

FEATURES

·본 제품은 순간유량 측정용(ASS)에 접점(Alarm Contact) 기능을 추가한 제품으로 접점신호는 1점점과 2 점점으로 구분 한다.

SPECIFICATION

CON'N	SIZE	MAT'L	PRESS.	TEMP.	ACCURACY
FLANGE	15A-300A	STEEL	ST. 10kgf/cm ²	ST. 120℃	FS ±3.0%
		SUS304	SP. 40kgf/cm ²	SP. 200℃	
SCREW	15A-50A	SUS316			

ALARM CONTACT

CAPACITY	AC 220V 10A
CONTACT OUTPUT	HIGH OR LOW SET ALARM
CONTACT TYPE	SENSOR SELF HOLDING FORM
CONTACT RATE	SPDT RELAY OUTPUT
CABLE ENTRY	PF 1/2" FEMALE
AMBIENT TEMP	-10 ~80℃

MODEL CODE

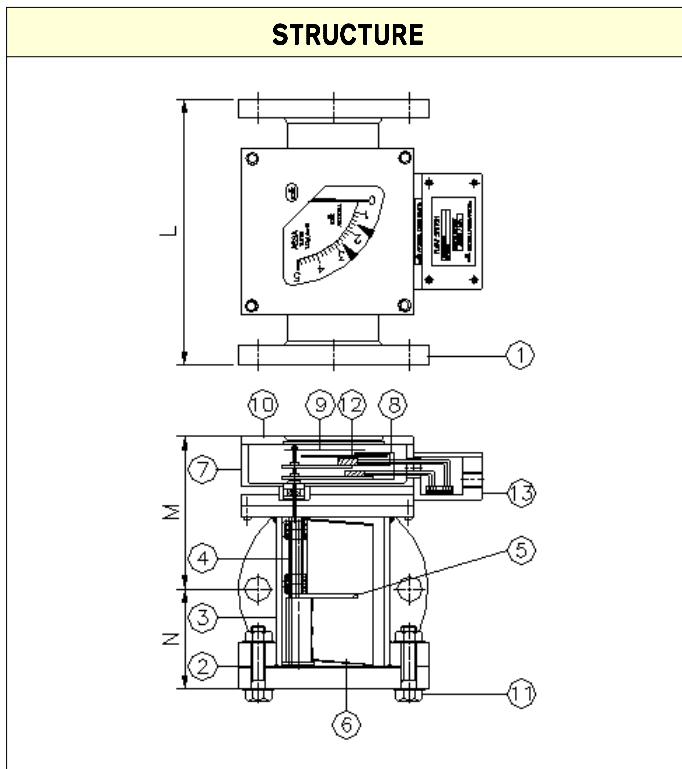
ASSA	-	<input type="checkbox"/>	-	<input type="checkbox"/>	-	<input type="checkbox"/>	-	<input type="checkbox"/>	DESCRIPTION
FLOW DIRECTION		1							BOTTOM - TOP
		5							SIDE - SIDE
		6							TOP - BOTTOM
MATERIAL				1					STEEL
				2					SUS304
				3					SUS316
				0					OTHER
CONNECTION						J			JIS 10K RF
						A			ANSI 150# RF
						D			DIN PN10/16
						P			PT(Male / Female)
						N			NPT(Male / Female)
						0			OTHER
CONTACT								1	ONE POINT ALARM
								2	TWO POINT ALARM



Flowmeter Product Directory

MODEL : ASSA

FLOW RATE								
SIZE	DIVIDE	ALLOW RANGE			LENGTH (mm)			
		H ₂ O (m ³ /h)	AIR (Nm ³ /h) 0.5 kgf/cm ² G · 20°C	STEAM (kg/h) 3 kgf/cm ² G	M	N	L	
							FLANGE	SCREW
15A	1/2B	0.1 - 0.5	6 - 30	10 - 50	90	30	220	150
		0.4 - 2	12 - 60	20 - 100				
20A	3/4B	0.1 - 0.5	6 - 30	10 - 50	90	30	220	160
		0.4 - 2	12 - 60	20 - 100				
25A	1B	0.2 - 1	12 - 60	10 - 50	100	40	220	180
		1 - 5	30 - 150	40 - 200				
32A	1 1/4B	0.2 - 1	12 - 60	10 - 50	100	50	220	200
		1 - 5	30 - 150	40 - 200				
40A	1 1/2B	0.4 - 2	16 - 80	20 - 100	110	50	220	200
		2 - 10	60 - 300	80 - 400				
50A	2B	0.6 - 3	20 - 100	20 - 100	120	60	220	220
		3 - 15	90 - 450	120 - 600				
65A	2 1/2B	1.2 - 6	60 - 300	80 - 400	120	70	260	220
		6 - 30	180 - 900	240 - 1200				
80A	3B	1.6 - 8	120 - 600	100 - 500	130	80	300	
		8 - 40	240 - 1200	400 - 2000				
100A	4B	3 - 15	180 - 900	200 - 1000	130	90	330	
		16 - 80	400 - 2000	700 - 3500				
125A	5B	4 - 20	200 - 1000	200 - 1000	140	100	380	
		20 - 100	600 - 3000	900 - 4500				
150A	6B	6 - 30	240 - 1200		180	120	480	
		30 - 150	900 - 4500					
200A	8B	12 - 60	300 - 1500		200	160	650	
		60 - 300	1800 - 9000					
250A	10B	16 - 80	600 - 3000		220	180	680	
		80 - 400	2400 - 12000					
300A	12B	20 - 100	900 - 4500		250	220	720	
		100 - 500	3000 - 15000					



PART LIST

NO	NAME	MATERIAL		
		NO.1	NO.2	NO.3
1	Flange	SS400	SUS304	SUS316
2	Packing	NBR, EPDM, VITON, TEFLON		
3	Body	SPP	SUS304	SUS316
4	Shaft	SS	SUS304	SUS316
5	Spring	SUS304	SUS304	SUS316
6	Flapper	SS	SUS304	SUS316
7	Case	AL2	SUS304	SUS316
8	Point	SS,SUS304		
9	Index	AL		
10	Cover	AL2		
11	Bolt Nut	STEEL	SUS304	SUS316
12	Senser	MICRO S/W (PACKAGE)		
13	Terminal Box	AL2		



Flowmeter Product Directory

MODEL : ASG



ASG-5-2-J

FEATURES

- 본제품은 Flapper 형식의 대표적인 모델로 풍부한 납품 실적이 있는 유량계이다.
- GLASS를 통해 유체의 흐름상태를 관찰하고 동시에 유량 값을 측정 할 수 있다.
- 투시되는 GLASS는 내압유리로 단단한 구조이며 외부 충격에 파손이 되어도 안전유리이기 때문에 위험요소를 극히 줄일 수 있다.
- 응고성, 고점도 및 찌꺼기 등의 유체 사용에 적합하다.

SPECIFICATION

CON`N	SIZE	MAT`L	PRESS.	TEMP.	ACCURACY
FLANGE	15A-300A	STEEL	MAX 10kgf/cm ²	MAX 120℃	FS.±3%
		SUS304			
SCREW	15A-65A	SUS316			

MODEL CODE

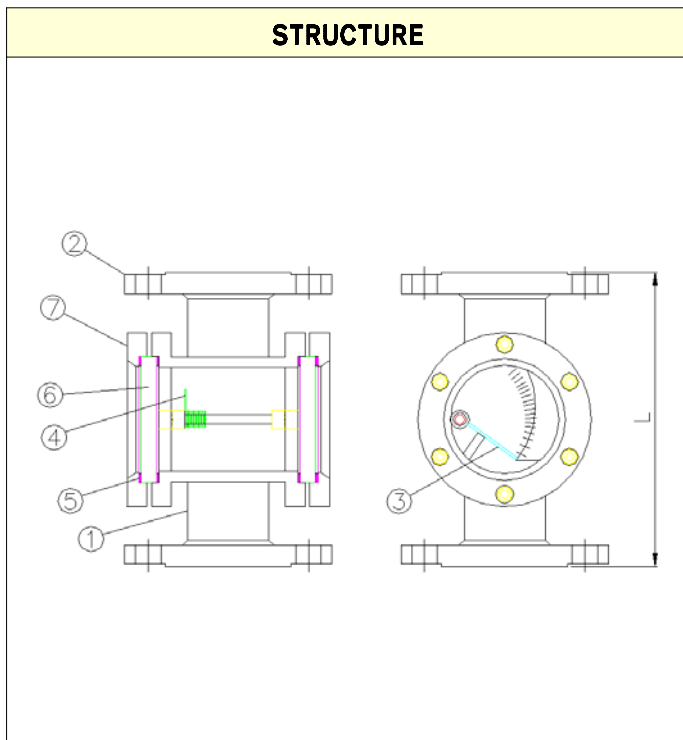
ASG	-	□	-	□	-	□	DESCRIPTION
FLOW DIRECTION		1					BOTTOM - TOP
		5					SIDE - SIDE
		6					TOP - BOTTOM
MATERIAL				1			STEEL
				2			SUS304
				3			SUS316
				0			OTHER
CONNECTION					J		JIS 10K RF (FF)
					A		ANSI 150# RF (FF)
					D		DIN PN10/16
					P		PT(Male / Female)
					N		NPT(Male / Female)
					0		OTHER



Flowmeter Product Directory

MODEL : ASG

FLOW RATE							
SIZE	DIVIDE	ALLOW RANGE		LIMIT kgf/cm ²	LENGTH (mm)		
		H ₂ O (m ³ /h)	AIR (N ^m /h) 0.5 kgf/cm ² G · 20℃		M	L	
						FLANGE	SCREW
15A	1/2B	0.1 - 0.5	6 - 30	10	100	220	150
		0.4 - 2	12 - 60				
20A	3/4B	0.1 - 0.5	6 - 30	10	100	220	160
		0.4 - 2	12 - 60				
25A	1B	0.2 - 1	12 - 60	10	110	220	180
		1 - 5	30 - 150				
32A	1 1/4B	0.2 - 1	12 - 60	10	120	220	200
		1 - 5	30 - 150				
40A	1 1/2B	0.4 - 2	16 - 80	10	125	220	200
		2 - 10	60 - 300				
50A	2B	0.6 - 3	20 - 100	10	135	220	220
		3 - 15	90 - 450				
65A	2 1/2B	1.2 - 6	60 - 300	10	155	260	220
		6 - 30	180 - 900				
80A	3B	1.6 - 8	120 - 600	10	170	300	
		8 - 40	240 - 1200				
100A	4B	3 - 15	180 - 900	10	195	330	
		16 - 80	400 - 2000				
125A	5B	4 - 20	200 - 1000	10	220	380	
		20 - 100	600 - 3000				
150A	6B	6 - 30	240 - 1200	10	250	480	
		30 - 150	900 - 4500				
200A	8B	12 - 60	300 - 1500	10	300	650	
		60 - 300	1800 - 9000				
250A	10B	16 - 80	600 - 3000	10	350	680	
		80 - 400	2400 - 12000				
300A	12B	20 - 100	900 - 4500	10	400	720	
		100 - 500	3000 - 15000				



PART LIST

NO	NAME	MATERIAL		
		NO.1	NO.2	NO.3
1	Body	SPP	SUS304	SUS316
2	Flange	SS400	SUS304	SUS316
3	Flapper	SS41	SUS304	SUS316
4	Spring	SUS304	SUS304	SUS316
5	Packing	NBR, EPDM, VITON, TEFLON		
6	Sight Glass	GLASS (H.S.)		
7	Cover	AL2		